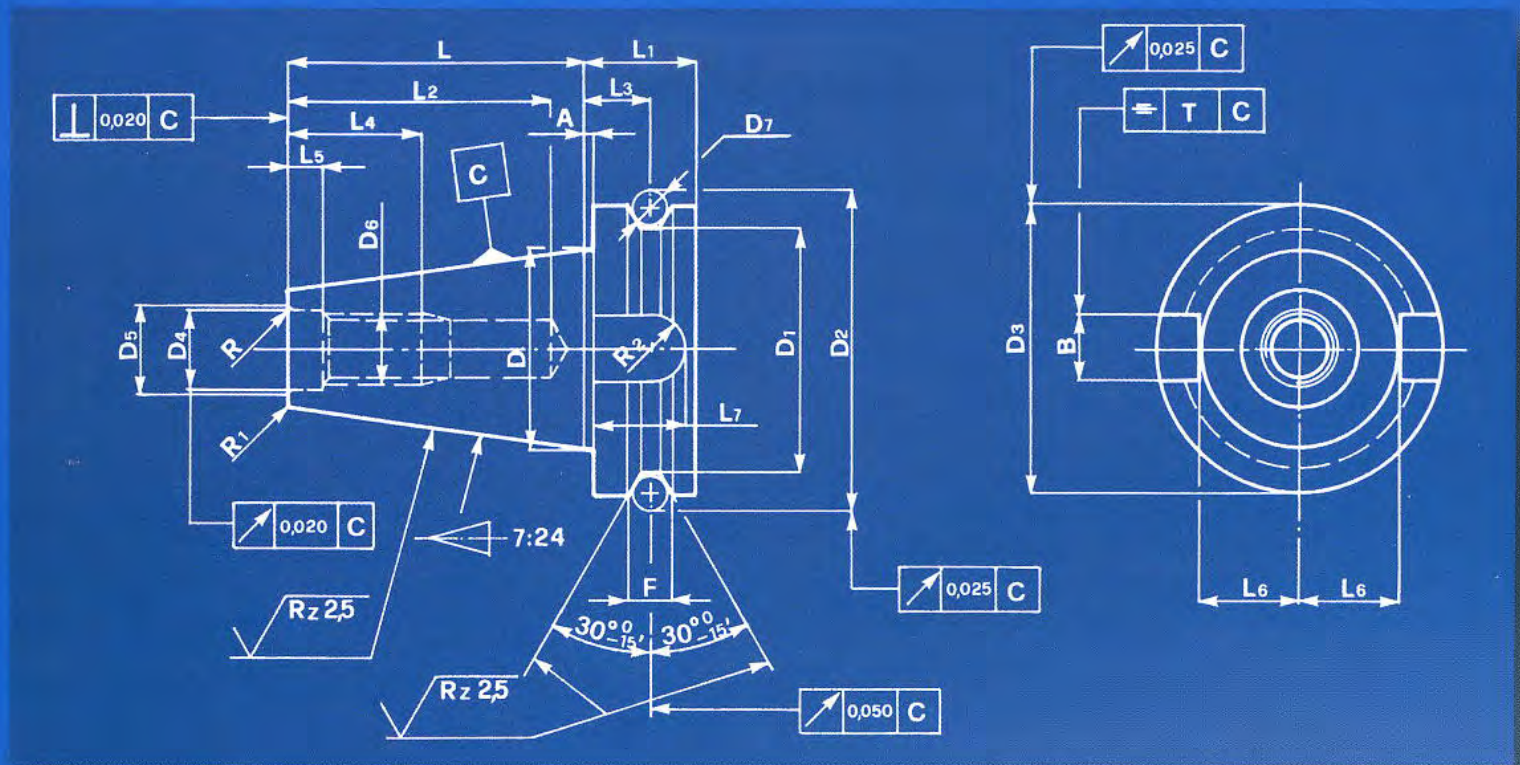


MAS 403BT



Cono - Size 40 50

A ± 0,2	2	3
B H12	16,1	25,7
D	44,45	69,85
D1 ^{-0,1} _{-0,3}	53	85
D2 ⁰ _{-0,1}	69,679	109,980
D3 ⁰ _{-0,05}	63	100
D4 H7	17	25
D5	19	27
D6 ⁰	M16	M24
D7	8	12
F ^{+0,1} ₀	10	15

Cono - Size 40 50

L ± 0,2	65,4	101,8
L1	27	38
L2	60	90
L3 ± 0,1	16,6	23,2
L4	30	45
L5 ± 0,1	8	11
L6 ⁰ _{-0,2}	22,6	35
L7	21	31
R	2	4
R1		1
R2	8,05	12,85
T	0,12	0,20

MANDRINI PAGNONI CON ATTACCO ISO

DATI TECNICI

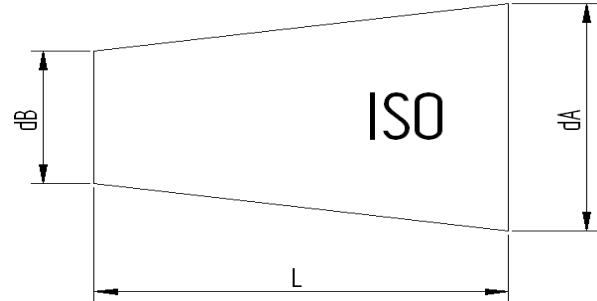


TUTTI I MANDRINI PORTAUTENSILI PAGNONI VENGONO PRODOTTI SECONDO LE NORMATIVE DIN

TOLLERANZA DEL CONO

PRODOTTI IN CLASSE **AT3**

ISO	L	dA - dB	AT3
30	42	12.250	+ 0.002
40	59	17.208	+ 0.003
50	92	26.833	+ 0.004



COASSIALITA' PORTAPINZE

La norma DIN6391 ammette un'errore massimo di 0.016 sia per i portapinze DIN6499 che per i portapinze DIN 6388.

La nostra produzione normalmente presenta uno scostamento massimo di eccentricità tra cono ISO e sede pinza compreso tra i 0,003 mm e 0,010 mm.

COASSIALITA' PORTAFRESE FISSI E COMBINATI

I portafrese fissi e combinati di nostra produzione rispondono ai criteri prescritti dalla norma DIN6358, la quale prevede un errore massimo di coassialità tra cono ISO 30 e ISO 40 ed i diametri 16 / 22 / 27 / 32 / 40, di 0,01.

Mentre per ISO 50 è ammesso un errore massimo di 0,015 mm.

COASSIALITA' PORTAFRESE WELDON

Rispettando la normativa DIN 6359-1 i portafrese WELDON devono rispondere ai seguenti requisiti:

Foro: tolleranza H5

Coassialità: scostamento massimo consentito tra cono e sede WELDON <0.01 (solo per ISO 40)

Garantiamo la tolleranza prescritta sul foro e un valore di coassialità mediamente di 0.005

EQUILIBRATURA

La maggior parte dei portautensili presenti in questa categoria sono prebilanciati in classe G 6,3 a 8.000 rpm min⁻¹. oppure bilanciati in classe G 6,3 a 12.000 rpm min⁻¹.

DATI COSTRUTTIVI

- Costruiti in acciaio da cementazione legato.
- Cementati con profondità 0,4 - 0,5 mm.
- Temprati e rinvenuti.
- Durezza HRC 58 ± 2 resistenza 800-1000 N / mm².
- Bruniti
- Finitura di rettifica interna, esterna e nelle filettature delle ghiera chiudipinza.

EQUILIBRATURA MANDRINI PER ALTE VELOCITA'

Eventuali bilanciature supplementari sui nostri mandrini vengono eseguite su richiesta cliente, con una classe massima di bilanciatura di G 2,5 a 25.000 rpm.

DATI COSTRUTTIVI PER MANDRINI PER ALTE VELOCITA'

- Costruiti in acciaio da cementazione legato.
- Cementati con profondità 0,4 - 0,5 mm.
- Temprati e rinvenuti.
- Durezza HRC 58 ± 2 resistenza 800-1000 N / mm².
- Bruniti
- Finitura di rettifica interna, esterna e nelle filettature delle ghiera chiudipinza.
- Collaudati 100% con strumenti di misura certificati e forniti con certificato di bilanciatura.

PAGNONI DIN TOOLHOLDERS

TECHNICAL FEATURES

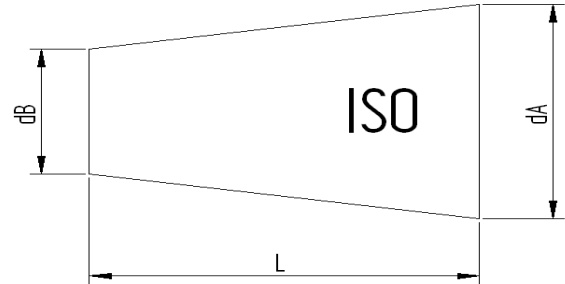


ALL PAGNONI TOOLHOLDERS ARE MANUFACTURED ACCORDING TO DIN NORM.

CONE'S TOLERANCE

ACCORDING TO THE CLASS **AT3**

ISO	L	dA - dB	AT3
30	42	12.250	+ 0.002
40	59	17.208	+ 0.003
50	92	26.833	+ 0.004



COLLET CHUCK'S RUNOUT ACCURACY

The norm DIN6391 permits a runout error between external cone and internal cone / collet of 0.016
Our production has a runout accuracy which is guaranteed to be within 0,003 / 0,010 mm at the tool seat.

SHELL END MILL ADAPTOR'S RUNOUT ACCURACY

Our shell end mill adaptors meet the requirements of the norm DIN6358, which prescribes for diameters 16 / 22 / 27 / 32 / 40 a runout accuracy of: 0,01 for SK 30 / 40 and 0,015 for SK50.

WELDON END MILL HOLDER'S RUNOUT ACCURACY

According to the DIN6359-1 Weldon end mill holders have to meet the following requirements:
Bore: H5 tolerance
Runout accuracy: <0.01 (for SK40)
Our end mill adaptors ensure the prescribed holes' tolerance and have a runout accuracy which is normally 0.005

BALANCING

The major part of toolholders of this category can run up to 8.000 rpm grade G 6,3 or 12.000 rpm.
Besides the descriptive and dimensional table of products, you can find the additive balancing grade.

CONSTRUCTIVE FEATURES

- Manufactured with Casehardening Steel.
- Casehardened with depth 0,4 - 0,5 mm.
- Hardened-Tempered.
- Hardness HRC 58 ± 2, strenght 800-1000 N / mm2.
- Black oxidized.
- Internal and external grinding finished.

HIGH-SPEED BALANCING TOOLHOLDERS

Any additional balancing on our toolholders are carried out on client request, with a class maximum of balancing of 25.000 rpm grade G 2,5.

CONSTRUCTIVE FEATURES FOR HIGH-SPEED TOOLHOLDERS

- Manufactured with Casehardening Steel.
- Casehardened with depth 0,4 - 0,5 mm.
- Hardened-Tempered.
- Hardness HRC 58 ± 2, strenght 800-1000 N / mm2.
- Black oxidized.
- Internal and external grinding finished of the cone.
- Grinding finish on the front side and on the thread of collet nuts.
- Tested 100% with certified measuring instruments and supplied with balancing certificate.

PAGNONI - STEILKEGELAUFNAHMEN

TECHNISCHE DATEN

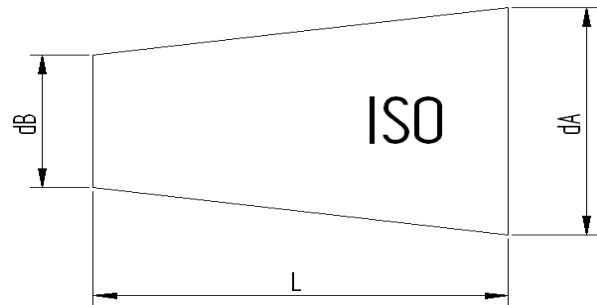


Alle Pagnoni - steilkegelaufnahmen werden nach den DIN-Normen angefertigt.

KEGELSCHAFTTOLERANZ

In Klasse **AT3** angefertigt.

ISO	L	dA - dB	AT3
30	42	12.250	+ 0.002
40	59	17.208	+ 0.003
50	92	26.833	+ 0.004



RUNDLAUFGENAUIGKEIT DER SPANNZANGENAUFNAHME

Die DIN 639-Norm schreibt eine Rundlaufgenauigkeit zwischen Aussenkegel und Innenkegel/Spannzangensitz vom 0,016 vor. Unsere Spannzangenfutter weisen einen Rundlauffehler zwischen ISO-Kegelaufnahme und Spannzangensitz, der zwischen 0,003 und 0,010 mm liegt.

AUFSTECKFRÄSDORNE - RUNDLAUFGENAUIGKEIT

Pagnoni-Aufsteckfräsdorne entsprechen der DIN 6358-Norm, die einen höchsten Rundlauffehler zwischen ISO 30- und ISO 40- Kegel und den Durchmessern 16 / 22 / 27 / 32 / 40 vom 0,01 vorsieht.

Der mögliche höchste Rundlauffehler für ISO 50 ist 0,015 mm.

WELDON AUFSTECKFRÄSDORNE - RUNDLAUFGENAUIGKEIT

Nach der DIN 6359-1-Norm müssen die Weldon - Aufsteckfräsdorne die folgenden Forderungen aufweisen:

Bohrung: toleranz H5

Rundlaufgenauigkeit: höchster möglicher Rundlauffehler zwischen Kegel und Weldonsitz <0,01 (für ISO 40).

Die vorgeschriebene Toleranz der Bohrung und eine durchschnittliche Rundlaufgenauigkeit von 0,005 sind verischart.

WUCHTUNG

Die meisten Werkzeughalter dieser Gruppe sind in Klasse G6,3 auf 8.000 U/Min -1 vorgewuchtet oder auf 12.000 U/Min -1 gewuchtet.

KONSTRUKTIONSDATEN

- Aus legiertem Einsatzstahl angefertigt.
- in der Einsatzhärte tiefe von 0,4 - 0,5 mm zementiert.
- gehärtet, angelassen.
- Härte HRC 58 ± 2, 800-1000 N / mm2.
- Brüniert
- inneres, äußeres Schleifen und am Gewinde der Spannzangenmutter.

WUCHTUNG MIT HOCHGESCHWINDIGKEIT

Auf Anfrage können wir die Werkzeughalter auf maximal G2,5 25.000 U/Min gegen Aufpreis auswuchten.

KONSTRUKTIONSDATEN

- aus legiertem Einsatzstahl angefertigt.
- in der Einsatzhärte tiefe von 0,4 - 0,5 mm zementiert.
- gehärtet, angelassen.
- Härte HRC 58 ± 2, 800-1000 N / mm2.
- Brüniert
- inneres, äußeres Schleifen des Kegels.
- 100% durch zertifizierte Meßinstrumente geprüft und mit Wuchtungsprotokoll geliefert.

MANDRINS PAGNONI AVEC ATTACHEMENT ISO

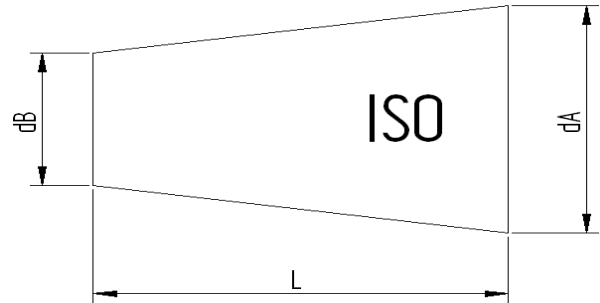
DONNE TECHNIQUES

Tous les mandrins porte-outils PAGNONI sont produits suivant les spécifications DIN.

TOLLERANCE DU CONE

En classe **AT3**.

ISO	L	dA - dB	AT3
30	42	12.250	+ 0.002
40	59	17.208	+ 0.003
50	92	26.833	+ 0.004



COAXIALITÉ PORTE-PINCE

La norme DIN6391 admet une erreur maximum du 0,016 soit pour les porte-pinces DIN6499 soit pour DIN6388. Dans notre production l'écart d'excentricité maximum entre cône ISO et logement de la pince est compris entre: 0,003 et 0,010 mm.

COAXIALITÉ PORTE-FRAISES FIXES ET COMBINES

Les porte-fraises fixes et combinés de notre production suivent la spécification de la norme DIN 6358, qui prévoit pour les diamètres 16 / 22 / 27 / 32 / 40 une concentricité de 0,01 pour ISO 30 et ISO 40 0,015 pour ISO 50.

COAXIALITÉ PORTE-FRAISES WELDON

Suivant les spécifications DIN6359-1 les porte-fraises WELDON doivent suivre les conditions suivantes:

- Trou: tolérance H5.
- Coaxialité: écart maximum toléré entre cône et logement du Weldon <0,01 (pour ISO 40).
- Nous assurons la tolérance prévue sur le trou et une coaxialité en moyenne de 0,005.

EQUILIBRAGE

La plupart des porte-outils sont pré-équilibrés en classe G 6,3 8.000 Tr/Min -1 ou équilibrés à 12.000 Tr/Min -1.

ELEMENTS DE CONSTRUCTION

- Produits en acier cémenté allié.
- Cémentés avec une profondeur 0,4 - 0,5 mm.
- Trempé - Revenu.
- Dureté HRC 58 ± 2 résistance 800-1000 N / mm².
- Brunis.
- Rectification du cône intérieur, extérieur et dans le filetage des écrous qui serrent la pince.

EQUILIBRAGE MANDRINS POUR HAUTE VITESSE

Équilibrage éventuels sur nos mandrins sont exécutés sur demande du client, avec une maximum classe de équilibrage de G2,5 à 25.000 rpm.

ELEMENTS DE CONSTRUCTION POUR MANDRINS HAUTE VITESSE

- Produits en acier cémenté allié.
- Cémenté avec une profondeur 0,4 - 0,5 mm.
- Trempé - Revenu.
- Dureté HRC 58 ± 2 résistance 800-1000 N / mm².
- Brunis.
- Fiition de rectification intérieure, extérieure et di cône.
- Contrôlés à 100% avec des instruments de mesure certifiés et livrés avec un certificat d'équilibrage.

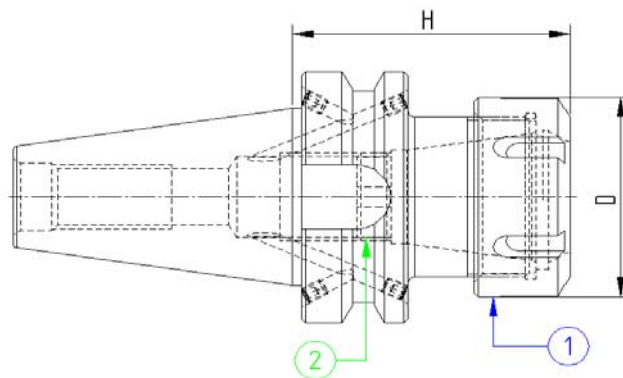
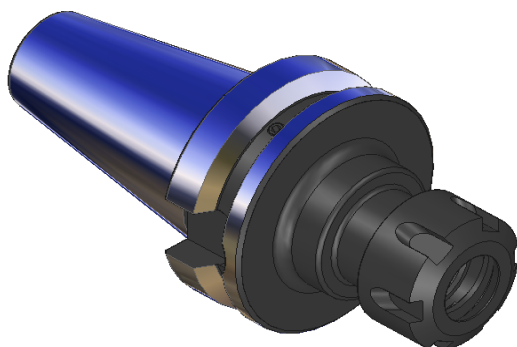

MANDRINI PORTAPINZA TIPO ER
 ER COLLET CHUCK
 MANDRINS A PINCES TYPE ER
 SPANNZANGENFUTTER ER



JIS-B 6339 M.AS 403/BT .AD/B

DIN 6499


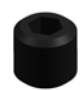
Bilanciato G.6,3 12.000 RPM



Codice	ISO	Descrizione	H	D
340PP110	40	ISO40 MAS403BT P/P H.70 ER16	70	32
340PP113	40	ISO40 MAS403BT P/P H.70 ER20	70	35
340PP116	40	ISO40 MAS403BT P/P H.70 ER25	70	42
340PP120	40	ISO40 MAS403BT P/P H.70 ER32	70	50
340PP126	40	ISO40 MAS403BT P/P H.70 ER40	70	63

----- Secondo fattibilità, fornibili su richiesta con cono ISO 30 -----

COMPONENTI - SPARE PARTS - PIECES DETACHEES - ERSATZTEILE

ER	GHIERA	Q.tà	GRANO	Q.tà
				
16	916GHREQ	1	101001601	1
20	920GHREQ	1	101001601	1
25	925GHREQ	1	101815801	1
32	932GHREQ	1	102215901	1
40	940GHREQ	1	103015901	1



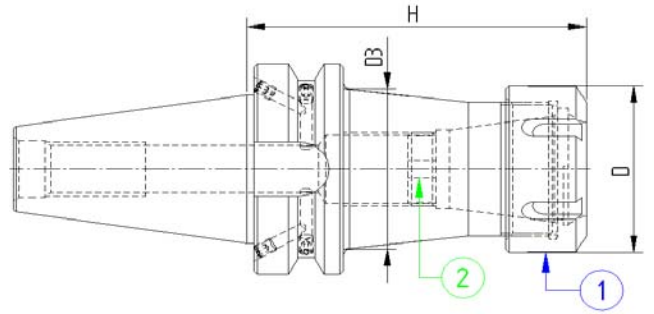
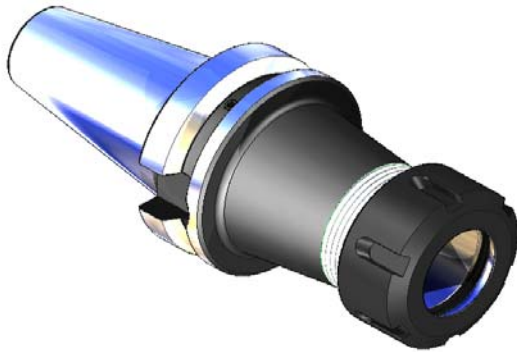
MANDRINI PORTAPINZA TIPO ER
ER COLLET CHUCK
MANDRINS A PINCES TYPE ER
SPANNZANGENFUTTER ER



JIS-B 6339 M.AS 403/BT .AD/B

DIN 6499

Bilanciato G.6,3 12.000 RPM



Codice	ISO	Descrizione	H	D3	D
340PP210	40	ISO40 MAS403BT P/P H100 ER16	100	-	32
340PP213	40	ISO40 MAS403BT P/P H100 ER20	100	-	35
340PP216	40	ISO40 MAS403BT P/P H100 ER25	100	-	42
340PP220	40	ISO40 MAS403BT P/P H100 ER32	100	-	50
340PP226	40	ISO40 MAS403BT P/P H100 ER40	100	50	63
340PP310	40	ISO40 MAS403BT P/P H130 ER16	130	36	32
340PP313	40	ISO40 MAS403BT P/P H130 ER20	130	40	35
340PP316	40	ISO40 MAS403BT P/P H130 ER25	130	42	42
340PP320	40	ISO40 MAS403BT P/P H130 ER32	130	50	50
340PP326	40	ISO40 MAS403BT P/P H130 ER40	130	50	63

----- Secondo fattibilità, fornibili su richiesta con cono ISO 30 -----

COMPONENTI - SPARE PARTS - PIECES DETACHEES - ERSATZTEILE

ER	GHIERA	Q.tà	GRANO	Q.tà
16	916GHREQ	1	101001601	1
20	920GHREQ	1	101001601	1
25	925GHREQ	1	101815801	1
32	932GHREQ	1	102215901	1
40	940GHREQ	1	103015901	1

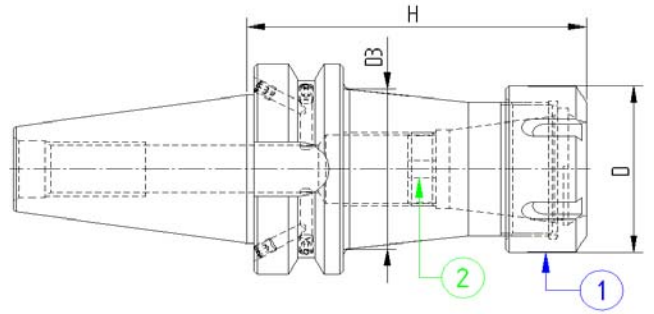
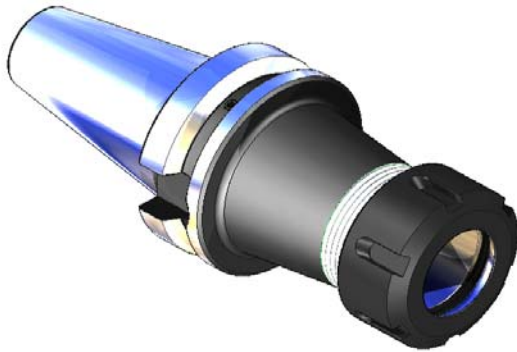
MANDRINI PORTAPINZA TIPO ER
ER COLLET CHUCK
MANDRINS A PINCES TYPE ER
SPANNZANGENFUTTER ER



JIS-B 6339 M.AS 403/BT AD/B

DIN 6499


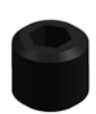
Bilanciato G.6,3 12.000 RPM



Codice	ISO	Descrizione	H	D3	D
340PP410	40	ISO40 MAS403BT P/P H160 ER16	160	-	32
340PP413	40	ISO40 MAS403BT P/P H160 ER20	160	-	35
340PP416	40	ISO40 MAS403BT P/P H160 ER25	160	-	42
340PP420	40	ISO40 MAS403BT P/P H160 ER32	160	-	50
340PP426	40	ISO40 MAS403BT P/P H160 ER40	160	50	63
340PP510	40	ISO40 MAS403BT P/P H200 ER16	200	-	32
340PP513	40	ISO40 MAS403BT P/P H200 ER20	200	-	35
340PP516	40	ISO40 MAS403BT P/P H200 ER25	200	-	42
340PP520	40	ISO40 MAS403BT P/P H200 ER32	200	-	50
340PP526	40	ISO40 MAS403BT P/P H200 ER40	200	50	63

----- Secondo fattibilità, fornibili su richiesta con cono ISO 30 -----

COMPONENTI - SPARE PARTS - PIÈCES DETACHEES - ERSATZTEILE

ER	GHIERA	Q.tà	GRANO	Q.tà
				
16	916GHREQ	1	101001601	1
20	920GHREQ	1	101001601	1
25	925GHREQ	1	101815801	1
32	932GHREQ	1	102215901	1
40	940GHREQ	1	103015901	1



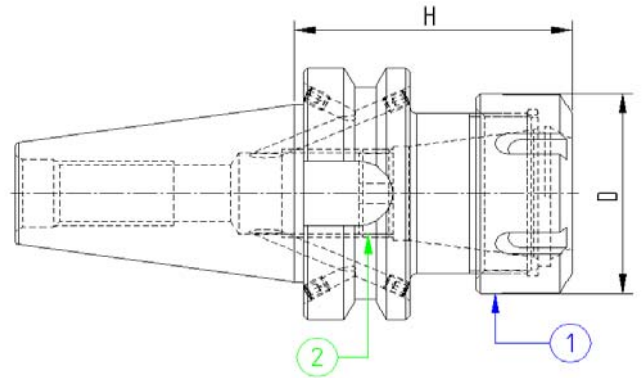
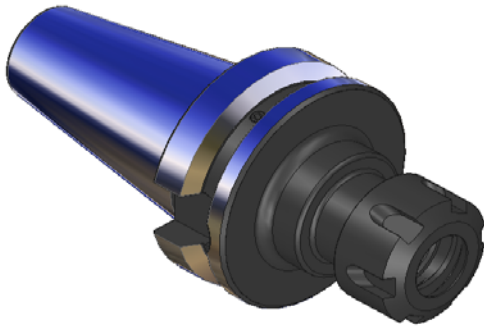
MANDRINI PORTAPINZA TIPO ER
ER COLLET CHUCK
MANDRINS A PINCES TYPE ER
SPANNZANGENFUTTER ER



JIS-B 6339 M.AS 403/BT .AD/B

DIN 6499

Bilanciato G.6,3 12.000 RPM



Codice	ISO	Descrizione	H	D
350PP110	50	ISO50 MAS403BT P/P H80 ER16	80	32
350PP113	50	ISO50 MAS403BT P/P H80 ER20	80	35
350PP116	50	ISO50 MAS403BT P/P H80 ER25	80	42
350PP120	50	ISO50 MAS403BT P/P H80 ER32	80	50
350PP126	50	ISO50 MAS403BT P/P H80 ER40	80	63

----- Secondo fattibilità, fornibili su richiesta con cono ISO 30 -----

COMPONENTI - SPARE PARTS - PIÈCES DETACHEES - ERSATZTEILE

ER	GHIERA	Q.tà	GRANO	Q.tà
16	916GHREQ	1	101001601	1
20	920GHREQ	1	101001601	1
25	925GHREQ	1	101815801	1
32	932GHREQ	1	102215901	1
40	940GHREQ	1	103015901	1

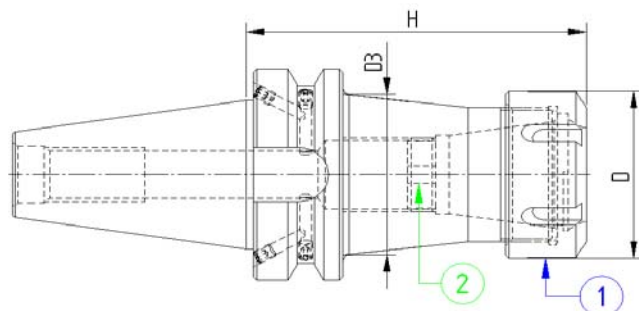
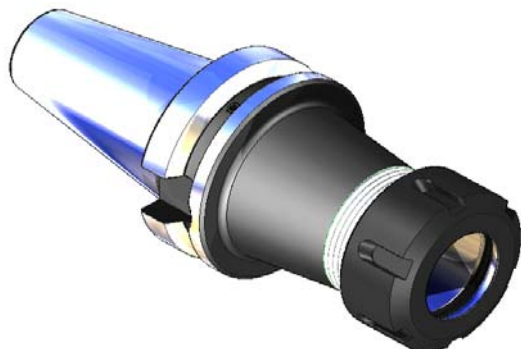

MANDRINI PORTAPINZA TIPO ER
 ER COLLET CHUCK
 MANDRINS A PINCES TYPE ER
 SPANNZANGENFUTTER ER



JIS-B 6339 M.AS 403/BT .AD/B

DIN 6499

Bilanciato G.6,3 12.000 RPM



Codice	ISO	Descrizione	H	D3	D
350PP210	50	ISO50 MAS403BT P/P H100 ER16	100	-	32
350PP213	50	ISO50 MAS403BT P/P H100 ER20	100	-	35
350PP216	50	ISO50 MAS403BT P/P H100 ER25	100	-	42
350PP220	50	ISO50 MAS403BT P/P H100 ER32	100	-	50
350PP226	50	ISO50 MAS403BT P/P H100 ER40	100	-	63
350PP234	50	ISO50 MAS403BT P/P H100 ER50	100	80	-
350PP310	50	ISO50 MAS403BT P/P H130 ER16	130	32	32
350PP313	50	ISO50 MAS403BT P/P H130 ER20	130	35	35
350PP316	50	ISO50 MAS403BT P/P H130 ER25	130	42	42
350PP320	50	ISO50 MAS403BT P/P H130 ER32	130	50	50
350PP326	50	ISO50 MAS403BT P/P H130 ER40	130	63	63
350PP334	50	ISO50 MAS403BT P/P H130 ER50	130	80	-

----- Secondo fattibilità, fornibili su richiesta con cono ISO 30 -----

COMPONENTI - SPARE PARTS - PIECES DETACHEES - ERSATZTEILE

ER	GHIERA	Q.tà	GRANO	Q.tà
16	916GHREQ	1	101001601	1
20	920GHREQ	1	101001601	1
25	925GHREQ	1	101815801	1
32	932GHREQ	1	102215901	1
40	940GHREQ	1	103015901	1
50	-	-	103015901	1



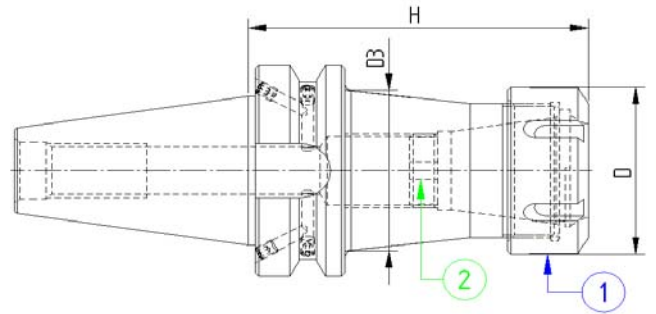
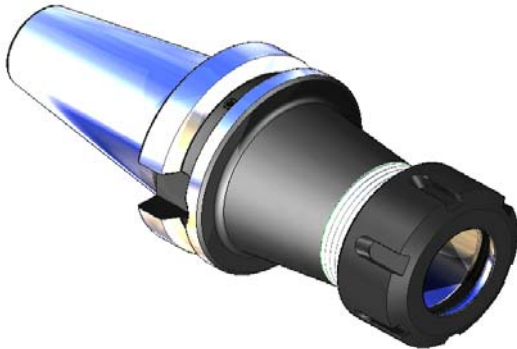
MANDRINI PORTAPINZA TIPO ER
ER COLLET CHUCK
MANDRINS A PINCES TYPE ER
SPANNZANGENFUTTER ER



JIS-B 6339 M.AS 403/BT .AD/B

DIN 6499

Bilanciato G.6,3 12.000 RPM



Codice	ISO	Descrizione	H	D3	D
350PP410	50	ISO50 MAS403BT P/P H160 ER16	160	32	32
350PP413	50	ISO50 MAS403BT P/P H160 ER20	160	35	35
350PP416	50	ISO50 MAS403BT P/P H160 ER25	160	42	42
350PP420	50	ISO50 MAS403BT P/P H160 ER32	160	50	50
350PP426	50	ISO50 MAS403BT P/P H160 ER40	160	63	63
350PP510	50	ISO50 MAS403BT P/P H200 ER16	200	32	32
350PP513	50	ISO50 MAS403BT P/P H200 ER20	200	42	42
350PP516	50	ISO50 MAS403BT P/P H200 ER25	200	42	42
350PP520	50	ISO50 MAS403BT P/P H200 ER32	200	50	50
350PP526	50	ISO50 MAS403BT P/P H200 ER40	200	63	63

----- Secondo fattibilità, fornibili su richiesta con cono ISO 30 -----

COMPONENTI - SPARE PARTS - PIECES DETACHEES - ERSATZTEILE

ER	GHIERA	Q.tà	GRANO	Q.tà
16	916GHREQ	1	101001601	1
20	920GHREQ	1	101001601	1
25	925GHREQ	1	101815801	1
32	932GHREQ	1	102215901	1
40	940GHREQ	1	103015901	1



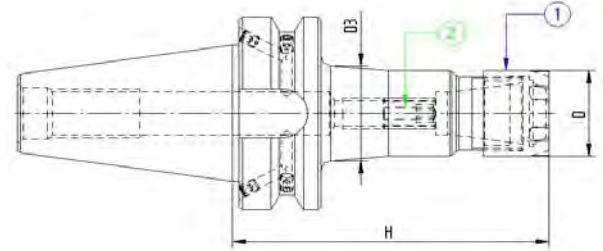
MANDRINI PORTAPINZA TIPO ER MINI
ER MINI COLLET CHUCK
MANDRINS A PINCES TYPE ER MINI
SPANNZANGENFUTTER ER MINI



JIS-B 6339 M.AS 403/BT .AD/B

DIN 6499

Bilanciato G.6,3 12.000 RPM



Codice	ISO	Descrizione	H	D3	D
340PM207	40	ISO40 MAS403BT P/P H100 ER11MINI	100	20	16
340PM210	40	ISO40 MAS403BT P/P H100 ER16MINI	100	26	22
340PM213	40	ISO40 MAS403BT P/P H100 ER20MINI	100	28	28
340PM216	40	ISO40 MAS403BT P/P H100 ER25MINI	100	35	35
340PM307	40	ISO40 MAS403BT P/P H130 ER11MINI	130	22	16
340PM310	40	ISO40 MAS403BT P/P H130 ER16MINI	130	28	22
340PM313	40	ISO40 MAS403BT P/P H130 ER20MINI	130	34	28
340PM316	40	ISO40 MAS403BT P/P H130 ER25MINI	130	40	35
340PM407	40	ISO40 MAS403BT P/P H160 ER11MINI	160	28	16
340PM410	40	ISO40 MAS403BT P/P H160 ER16MINI	160	26	22
340PM413	40	ISO40 MAS403BT P/P H160 ER20MINI	160	34	28
340PM416	40	ISO40 MAS403BT P/P H160 ER25MINI	160	35	35
340PM510	40	ISO40 MAS403BT P/P H200 ER16MINI	200	32	22
340PM513	40	ISO40 MAS403BT P/P H200 ER20MINI	200	38	28
340PM516	40	ISO40 MAS403BT P/P H200 ER25MINI	200	44	35

----- Secondo fattibilità, fornibili su richiesta con cono ISO 30 -----

COMPONENTI - SPARE PARTS - PIECES DETACHEES - ERSATZTEILE

ER MINI	GHIERA	Q.tà	GRANO	Q.tà
---------	--------	------	-------	------



11	911GHRMN	1	100601004	1
16	916GHRMN	1	101001601	1
20	920GHRMN	1	101001601	1
25	925GHRMN	1	101815801	1



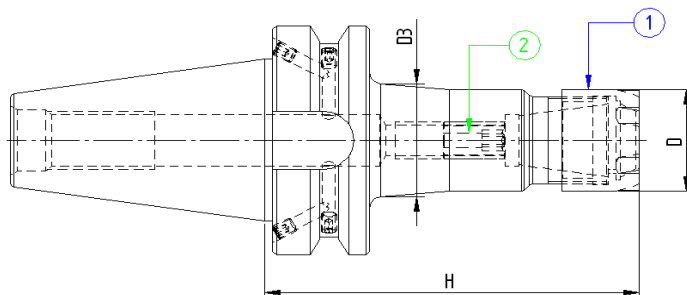
MANDRINI PORTAPINZA TIPO ER MINI
ER MINI COLLET CHUCK
MANDRINS A PINCES TYPE ER MINI
SPANNZANGENFUTTER ER MINI



JIS-B 6339 M.AS 403/BT.A

DIN 6357

Bilanciato G.6,3 12.000 RPM



Codice	ISO	Descrizione	H	D3	D
350PM210	50	ISO50 MAS403BT P/P H100 ER16MINI	100	26	22
350PM213	50	ISO50 MAS403BT P/P H100 ER20MINI	100	28	28
350PM216	50	ISO50 MAS403BT P/P H100 ER25MINI	100	35	35
350PM310	50	ISO50 MAS403BT P/P H130 ER16MINI	130	25	22
350PM313	50	ISO50 MAS403BT P/P H130 ER20MINI	130	32	28
350PM316	50	ISO50 MAS403BT P/P H130 ER25MINI	130	40	35
350PM410	50	ISO50 MAS403BT P/P H160 ER16MINI	160	28	22
350PM413	50	ISO50 MAS403BT P/P H160 ER20MINI	160	35	28
350PM416	50	ISO50 MAS403BT P/P H160 ER25MINI	160	40	35
350PM510	50	ISO50 MAS403BT P/P H200 ER16MINI	200	35	22
350PM513	50	ISO50 MAS403BT P/P H200 ER20MINI	200	42	28
350PM516	50	ISO50 MAS403BT P/P H200 ER25MINI	200	44	35

----- Secondo fattibilità, fornibili su richiesta con cono ISO 30 -----

COMPONENTI - SPARE PARTS - PIECES DETACHEES - ERSATZTEILE

Codice	GHIERA	Q.tà	GRANO	Q.tà
16	916GHRMN	1	101001601	1
20	920GHRMN	1	101001601	1
25	925GHRMN	1	101815801	1



MANDRINI PORTAPINZA TIPO EOC
EOC COLLET CHUCK
MANDRINS A PINCES TYPE EOC
SPANNZANGENFUTTER EOC



JIS-B 6339 M.AS 403/BT.AD/B

DIN 6388

Bilanciato G.6,3 12.000 RPM

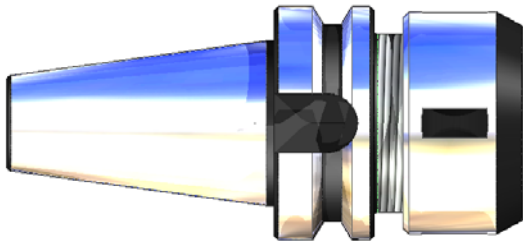


FIG. 1

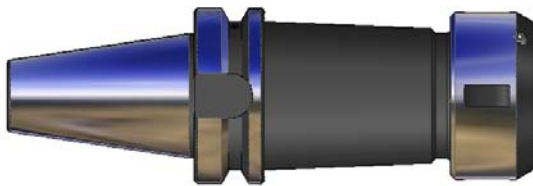
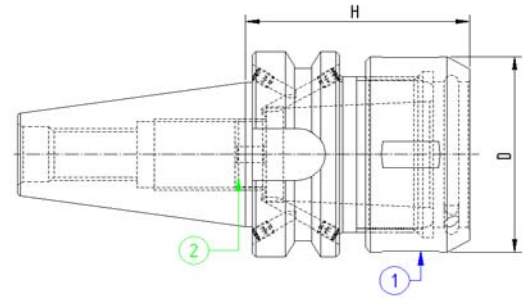
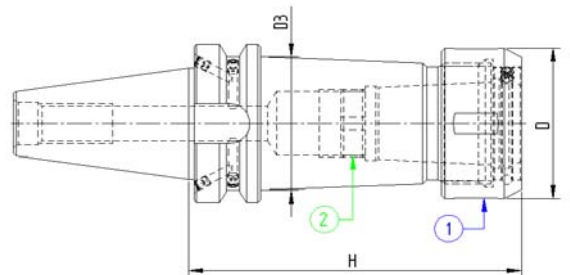


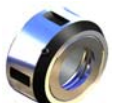

FIG. 2



Codice	ISO	Descrizione	H	D	D3	FIG.
340PO116	40	ISO40 MAS403BT P/P H70 EOC16	70	43	-	1
340PO125	40	ISO40 MAS403BT P/P H70 EOC25	70	60	-	1
340PO132	40	ISO40 MAS403BT P/P H80 EOC32	80	72	-	1
340PO216	40	ISO40 MAS403BT P/P H100 EOC16	100	43	-	1
340PO225	40	ISO40 MAS403BT P/P H100 EOC25	100	60	-	1
340PO316	40	ISO40 MAS403BT P/P H130 EOC16	130	43	42	2
340PO325	40	ISO40 MAS403BT P/P H130 EOC25	130	60	48	2

----- Secondo fattibilità, fornibili su richiesta con cono ISO 30 -----

COMPONENTI - SPARE PARTS - PIECES DETACHEES - ERSATZTEILE

EOC	GHIERA	Q.tà	GRANO	Q.tà
				
16	916GHROS	1	101815801	1
25	925GHROS	1	102715901	1
32	932GHROS	1	102715901	1

Bilanciato G.6,3 12.000 RPM

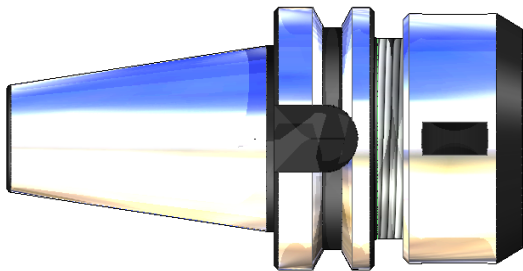


FIG. 1

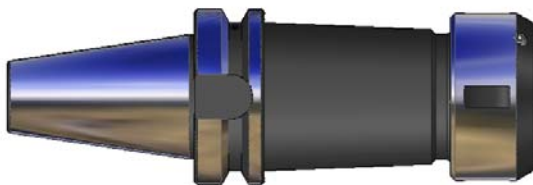
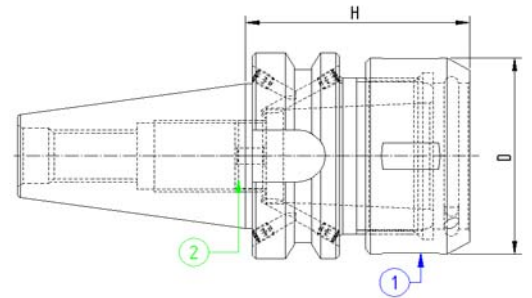
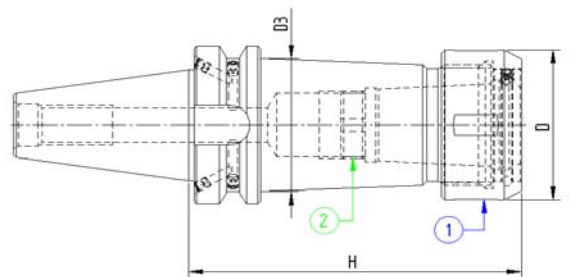


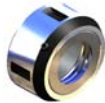
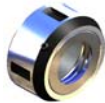

FIG. 2



Codice	ISO	Descrizione	H	D	D3	FIG.
350PO116	50	ISO50 MAS403BT P/P H70 EOC16	70	43	-	1
350PO125	50	ISO50 MAS403BT P/P H85 EOC25	85	60	-	1
350PO132	50	ISO50 MAS403BT P/P H90 EOC32	90	72	-	1
350PO216	50	ISO50 MAS403BT P/P H100 EOC16	100	43	-	1
350PO225	50	ISO50 MAS403BT P/P H100 EOC25	100	60	-	1
350PO232	50	ISO50 MAS403BT P/P H100 EOC32	100	72	-	1
350PO325	50	ISO50 MAS403BT P/P H130 EOC25	130	60	48	2
350PO332	50	ISO50 MAS403BT P/P H130 EOC32	130	72	60	2

----- Secondo fattibilità, fornibili su richiesta con cono ISO 30 -----

COMPONENTI - SPARE PARTS - PIECES DETACHEES - ERSATZTEILE

EOC	VITE	Q.tà	GRANO	Q.tà
		1		1
16	916GHROS	1	101815801	1
25	925GHROS	1	102715901	1
32	932GHROS	1	102715901	1



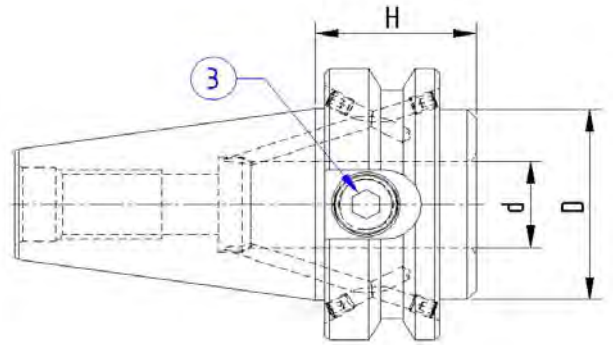
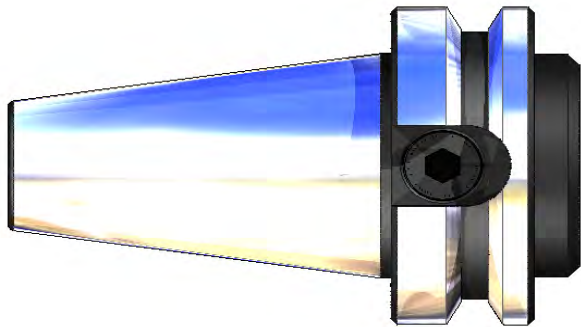
MANDRINI PORTAFRESE TIPO WELDON
 END MILL HOLDERS WELDON
 MANDRINS POUR OUTIL TYPE WELDON
 ZYLINDERSCHAFTAUFNAHME WELDON



JIS-B 6339 M.AS 403/BT .AD/B

DIN 1835 B

Bilanciato G.6,3 12.000 RPM



Codice	ISO	Descrizione	H	d	D
340WLC16	40	ISO40 MAS403BT WELDON H35 D.16	35	16	44
340WLC20	40	ISO40 MAS403BT WELDON H35 D.20	35	20	44
340WLC25	40	ISO40 MAS403BT WELDON H35 D.25	35	25	44
340WLC32	40	ISO40 MAS403BT WELDON H70 D.32	70	32	72

COMPONENTI - SPARE PARTS - PIECES DETACHEES - ERSATZTEILE

Ø	GRANO	Q.tà	GRANO INT.	Q.tà
16	101401604	1	-	-
20	101401204	1	-	-
25	101601004	1	-	-
32	102002002	1	101610701	1

Codice	ISO	Descrizione	H	d	D
350WLC16	50	ISO50 MAS403BT WELDON H44 D.16	44	16	70
350WLC20	50	ISO50 MAS403BT WELDON H44 D.20	44	20	70
350WLC25	50	ISO50 MAS403BT WELDON H44 D.25	44	25	70
350WLC32	50	ISO50 MAS403BT WELDON H44 D.32	44	32	80
350WLC40	50	ISO50 MAS403BT WELDON H44 D.40	44	40	80

COMPONENTI - SPARE PARTS - PIECES DETACHEES - ERSATZTEILE

Ø	GRANO	Q.tà
16	101401604	1
20	101601604	1
25	101802002	1
32	102002002	1
40	102002002	1

----- Secondo fattibilità, fornibili su richiesta con cono ISO 30 -----



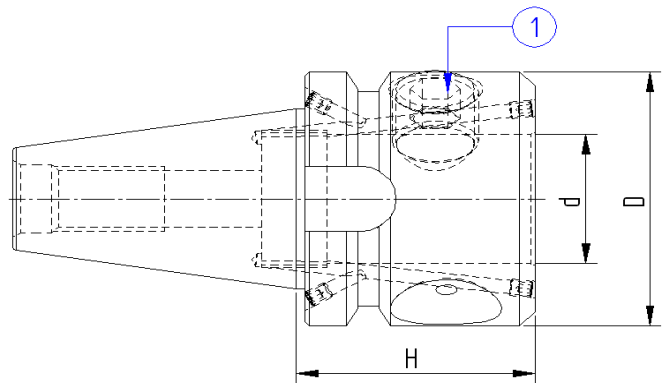
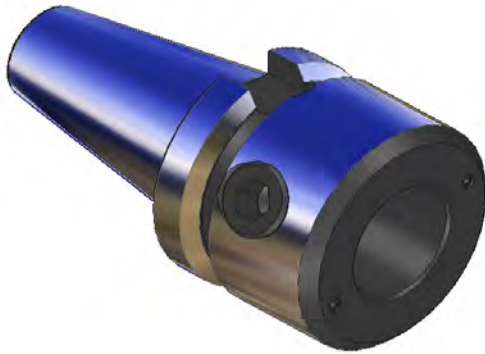
MANDRINI PORTAFRESE TIPO WELDON
 END MILL HOLDERS WELDON
 MANDRINS POUR OUTIL TYPE WELDON
 ZYLINDERSCHAFTAUFNAHME WELDON



JIS-B 6339 M.AS 403/BT .AD/B

DIN 1835 B

Bilanciato G.6,3 12.000 RPM



Codice	ISO	Descrizione	H	d	D
340WLS25	40	ISO40 MAS403BT WELDON H55 D.25	55	25	63
340WLS32	40	ISO40 MAS403BT WELDON H55 D.32	55	34	63

----- Secondo fattibilità, fornibili su richiesta con cono ISO 30 -----

COMPONENTI - SPARE PARTS - PIECES DETACHEES - ERSATZTEILE

Ø	GRANO	Q.tà
---	-------	------



25	-	-
32	102001604	1



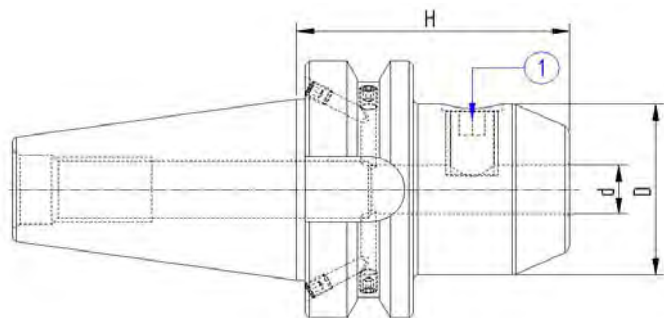
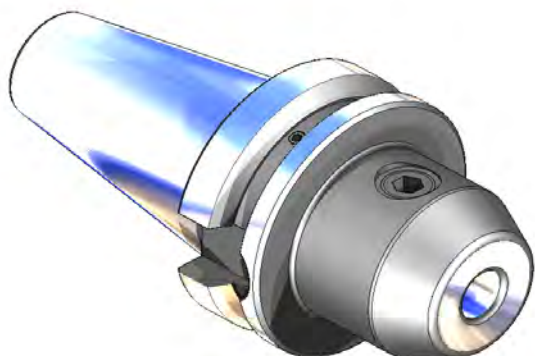
MANDRINI PORTAFRESE TIPO WELDON
 END MILL HOLDERS WELDON
 MANDRINS POUR OUTIL TYPE WELDON
 ZYLINDERSCHAFTAUFNAHME WELDON



JIS-B 6339 M.AS 403/BT .AD/B

DIN 1835 B

Bilanciato G.6,3 12.000 RPM



Codice	ISO	Descrizione	H	d	D
340WLD06	40	ISO40 MAS403BT WELDON H50 D.06	50	6	25
340WLD08	40	ISO40 MAS403BT WELDON H50 D.08	50	8	28
340WLD10	40	ISO40 MAS403BT WELDON H63 D.10	63	10	35
340WLD12	40	ISO40 MAS403BT WELDON H63 D.12	63	12	42
340WLD14	40	ISO40 MAS403BT WELDON H63 D.14	63	14	44
340WLD16	40	ISO40 MAS403BT WELDON H63 D.16	63	16	48
340WLD18	40	ISO40 MAS403BT WELDON H63 D.18	63	18	50
340WLD20	40	ISO40 MAS403BT WELDON H63 D.20	63	20	52
340WLD25	40	ISO40 MAS403BT WELDON H90 D.25	90	25	65
340WLD32	40	ISO40 MAS403BT WELDON H100 D.32	100	32	72
340WLD40	40	ISO40 MAS403BT WELDON H105 D.40	105	40	80

----- Secondo fattibilità, fornibili su richiesta con cono ISO 30 -----

COMPONENTI - SPARE PARTS - PIECES DETACHEES - ERSATZTEILE

Ø	GRANO	Q.tà
---	-------	------



6	100601004	1
8	100801004	1
10	101001204	1
12	101201604	1
14	101201604	1
16	101401604	1
18	101401604	1
20	101601604	1
25	101802002	2
32	102002002	2
40	102002002	2



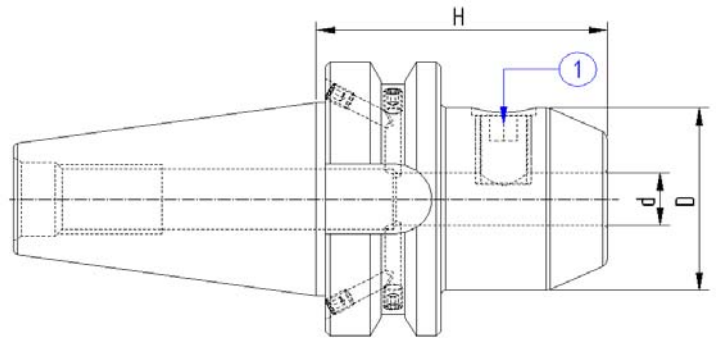
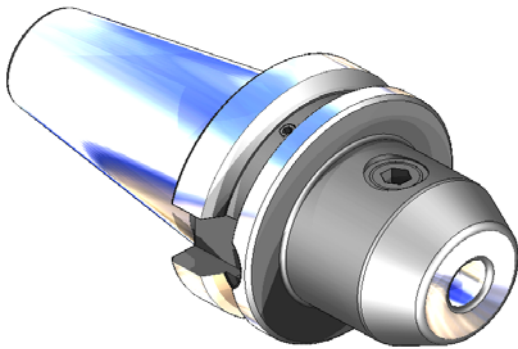
MANDRINI PORTAFRESE TIPO WELDON
 END MILL HOLDERS WELDON
 MANDRINS POUR OUTIL TYPE WELDON
 ZYLINDERSCHAFTAUFNAHME WELDON



JIS-B 6339 M.AS 403/BT .AD/B

DIN 1835 B

Bilanciato G.6,3 12.000 RPM



Codice	ISO	Descrizione	H	d	D
350WLD06	50	ISO50 MAS403BT WELDON H63 D.6	63	6	25
350WLD08	50	ISO50 MAS403BT WELDON H63 D.8	63	8	28
350WLD10	50	ISO50 MAS403BT WELDON H63 D.10	63	10	35
350WLD12	50	ISO50 MAS403BT WELDON H80 D.12	80	12	42
350WLD14	50	ISO50 MAS403BT WELDON H80 D.14	80	14	44
350WLD16	50	ISO50 MAS403BT WELDON H80 D.16	80	16	48
350WLD18	50	ISO50 MAS403BT WELDON H80 D.18	80	18	50
350WLD20	50	ISO50 MAS403BT WELDON H80 D.20	80	20	52
350WLD25	50	ISO50 MAS403BT WELDON H100 D.25	100	25	65
350WLD32	50	ISO50 MAS403BT WELDON H105 D.32	105	32	72
350WLD40	50	ISO50 MAS403BT WELDON H120 D.40	120	40	80
350WLD50	50	ISO50 MAS403BT WELDON H125 D.50	125	50	90

----- Secondo fattibilità, fornibili su richiesta con cono ISO 30 -----

COMPONENTI - SPARE PARTS - PIECES DETACHEES - ERSATZTEILE

Ø	GRANO	Q.tà
---	-------	------



6	100601004	1
8	100801004	1
10	101001204	1
12	101201604	1
14	101201604	1
16	101401604	1
18	101401604	1
20	101601604	1
25	101802002	2
32	102002002	2
40	102002002	2
50	102422504	2



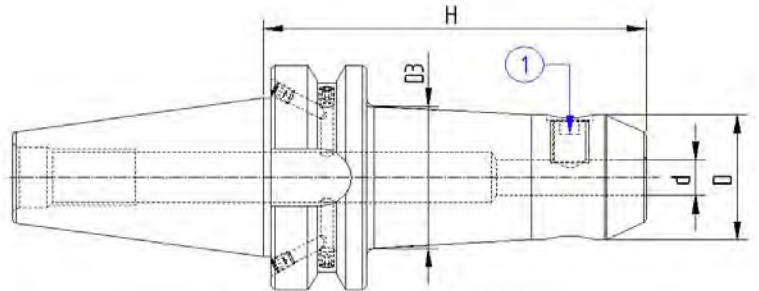
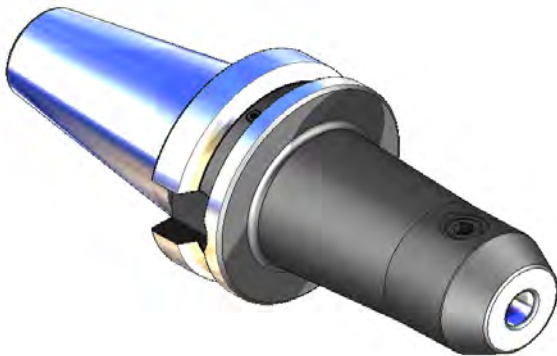
MANDRINI PORTAFRESE TIPO WELDON
 END MILL HOLDERS WELDON
 MANDRINS POUR OUTIL TYPE WELDON
 ZYLINDERSCHAFTAUFNAHME WELDON



JIS-B 6339 M.AS 403/BT .AD/B

DIN 1835 B

Bilanciato G.6,3 12.000 RPM



Codice	ISO	Descrizione	H	d	D	D3
340WE206	40	ISO40 MAS403BT WELDON H100 D.06	100	6	25	35
340WE208	40	ISO40 MAS403BT WELDON H100 D.08	100	8	28	38
340WE210	40	ISO40 MAS403BT WELDON H100 D.10	100	10	35	40
340WE212	40	ISO40 MAS403BT WELDON H100 D.12	100	12	42	-
340WE214	40	ISO40 MAS403BT WELDON H100 D.14	100	14	44	-
340WE216	40	ISO40 MAS403BT WELDON H100 D.16	100	16	48	-
340WE218	40	ISO40 MAS403BT WELDON H100 D.18	100	18	50	-
340WE220	40	ISO40 MAS403BT WELDON H100 D.20	100	20	52	-

----- Secondo fattibilità, fornibili su richiesta con cono ISO 30 -----

COMPONENTI - SPARE PARTS - PIECES DETACHEES - ERSATZTEILE

Ø	GRANO	Q.tà
---	-------	------



6	100601004	1
8	100801004	1
10	101001204	1
12	101201604	1
14	101201604	1
16	101401604	1
18	101401604	1
20	101601604	1



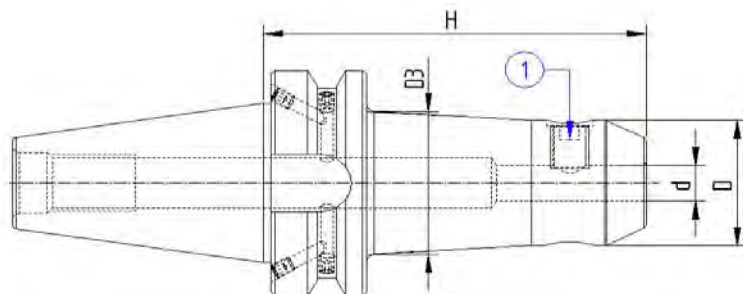
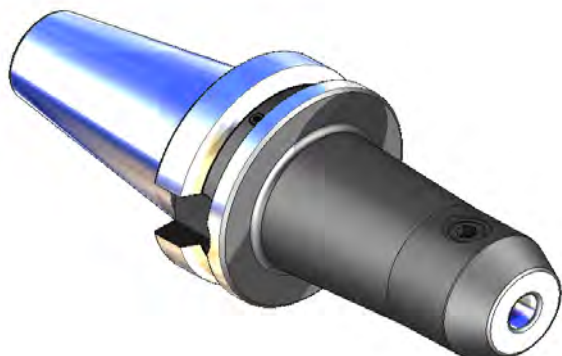
MANDRINI PORTAFRESE TIPO WELDON
 END MILL HOLDERS WELDON
 MANDRINS POUR OUTIL TYPE WELDON
 ZYLINDERSCHAFTAUFNAHME WELDON



JIS-B 6339 .MAS 403/BT .AD/B

DIN 1835 B

Bilanciato G.6,3 12.000 RPM



Codice	ISO	Descrizione	H	d	D	D3
340WE306	40	ISO40 MAS403BT WELDON H130 D.06	130	6	25	35
340WE308	40	ISO40 MAS403BT WELDON H130 D.08	130	8	28	38
340WE310	40	ISO40 MAS403BT WELDON H130 D.10	130	10	35	40
340WE312	40	ISO40 MAS403BT WELDON H130 D.12	130	12	42	-
340WE314	40	ISO40 MAS403BT WELDON H130 D.14	130	14	44	-
340WE316	40	ISO40 MAS403BT WELDON H130 D.16	130	16	48	-
340WE318	40	ISO40 MAS403BT WELDON H130 D.18	130	18	50	-
340WE320	40	ISO40 MAS403BT WELDON H130 D.20	130	20	52	-

----- Secondo fattibilità, fornibili su richiesta con cono ISO 30 -----

COMPONENTI - SPARE PARTS - PIECES DETACHEES - ERSATZTEILE

Ø	GRANO	Q.tà
---	-------	------



6	100601004	1
8	100801004	1
10	101001204	1
12	101201604	1
14	101201604	1
16	101401604	1
18	101401604	1
20	101601604	1



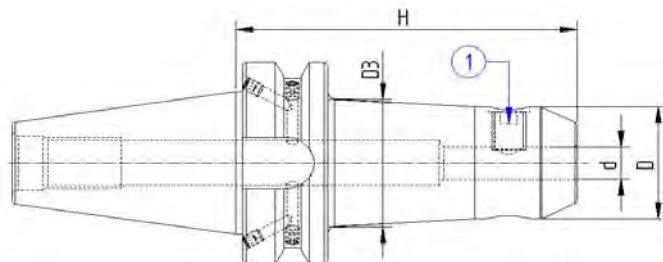
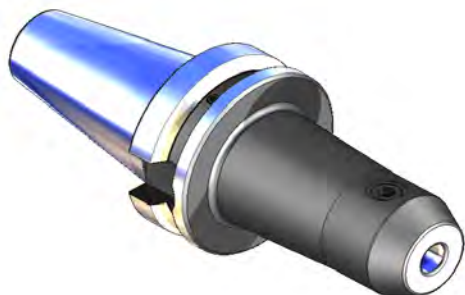
MANDRINI PORTAFRESE TIPO WELDON
 END MILL HOLDERS WELDON
 MANDRINS POUR OUTIL TYPE WELDON
 ZYLINDERSCHAFTAUFNABME WELDON



JIS-B 6339.M.AS 403/BT.AD/B

DLN 1835 B



Bilanciato G.6,3 12.000 RPM



Codice	ISO	Descrizione	H	d	D	D3
340WE406	40	ISO40 MAS403BT WELDON H160 D.06	160	6	25	35
340WE408	40	ISO40 MAS403BT WELDON H160 D.08	160	8	28	38
340WE410	40	ISO40 MAS403BT WELDON H160 D.10	160	10	35	40
340WE412	40	ISO40 MAS403BT WELDON H160 D.12	160	12	42	42
340WE414	40	ISO40 MAS403BT WELDON H160 D.14	160	14	44	44
340WE416	40	ISO40 MAS403BT WELDON H160 D.16	160	16	48	48
340WE418	40	ISO40 MAS403BT WELDON H160 D.18	160	18	50	50
340WE420	40	ISO40 MAS403BT WELDON H160 D.20	160	20	52	52
340WE425	40	ISO40 MAS403BT WELDON H160 D.25	160	25	65	65
340WE432	40	ISO40 MAS403BT WELDON H160 D.32	160	32	72	72
340WE506	40	ISO40 MAS403BT WELDON H200 D.6	200	6	25	38
340WE508	40	ISO40 MAS403BT WELDON H200 D.8	200	8	28	41
340WE510	40	ISO40 MAS403BT WELDON H200 D.10	200	10	35	43
340WE512	40	ISO40 MAS403BT WELDON H200 D.12	200	12	42	48
340WE514	40	ISO40 MAS403BT WELDON H200 D.14	200	14	44	48
340WE516	40	ISO40 MAS403BT WELDON H200 D.16	200	16	48	48
340WE518	40	ISO40 MAS403BT WELDON H200 D.18	200	18	50	50
340WE520	40	ISO40 MAS403BT WELDON H200 D.20	200	20	52	52
340WE525	40	ISO40 MAS403BT WELDON H200 D.25	200	25	65	65
340WE532	40	ISO40 MAS403BT WELDON H200 D.32	200	32	72	72

----- Secondo fattibilità, fornibili su richiesta con cono ISO 30 -----

COMPONENTI - SPARE PARTS - PIECES DETACHEES - ERSATZTEILE

Ø	GRANO	Q.tà	Ø	GRANO	Q.tà
					
6	100601004	1	16	101401604	1
8	100801004	1	18	101401604	1
10	101001204	1	20	101601604	1
12	101201604	1	25	101802002	2
14	101201604	1	32	102002002	2



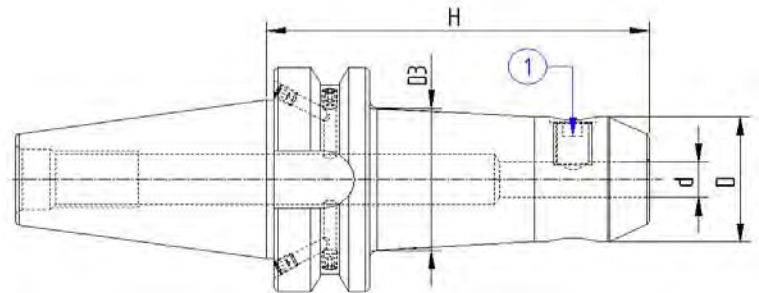
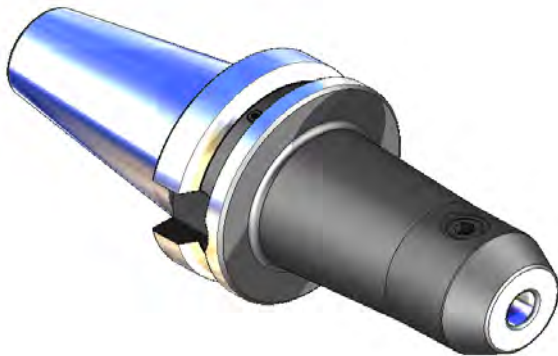
MANDRINI PORTAFRESE TIPO WELDON
 END MILL HOLDERS WELDON
 MANDRINS POUR OUTIL TYPE WELDON
 ZYLINDERSCHAFTAUFNAHME WELDON



JIS-B 6339 M.AS 403/BT .AD/B

DI N 1835 B

Bilanciato G.6,3 12.000 RPM



Codice	ISO	Descrizione	H	d	D	D3
350WE206	50	ISO50 MAS403BT WELDON H100 D.6	100	6	25	35
350WE208	50	ISO50 MAS403BT WELDON H100 D.8	100	8	28	38
350WE210	50	ISO50 MAS403BT WELDON H100 D.10	100	10	35	40
350WE212	50	ISO50 MAS403BT WELDON H100 D.12	100	12	42	-
350WE214	50	ISO50 MAS403BT WELDON H100 D.14	100	14	44	-
350WE216	50	ISO50 MAS403BT WELDON H100 D.16	100	16	48	-
350WE218	50	ISO50 MAS403BT WELDON H100 D.18	100	18	50	-
350WE220	50	ISO50 MAS403BT WELDON H100 D.20	100	20	52	-

----- Secondo fattibilità, fornibili su richiesta con cono ISO 30 -----

COMPONENTI - SPARE PARTS - PIECES DETACHEES - ERSATZTEILE

Ø	GRANO	Q.tà
---	-------	------



6	100601004	1
8	100801004	1
10	101001204	1
12	101201604	1
14	101201604	1
16	101401604	1
18	101401604	1
20	101601604	1



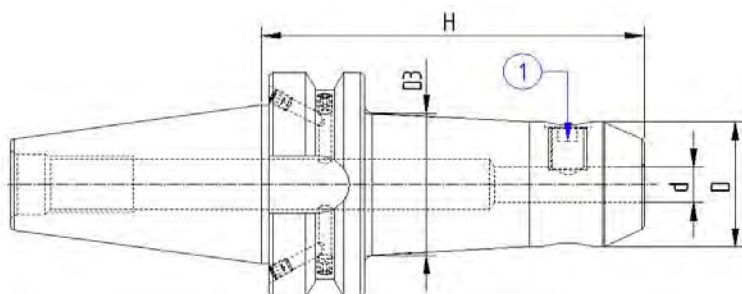
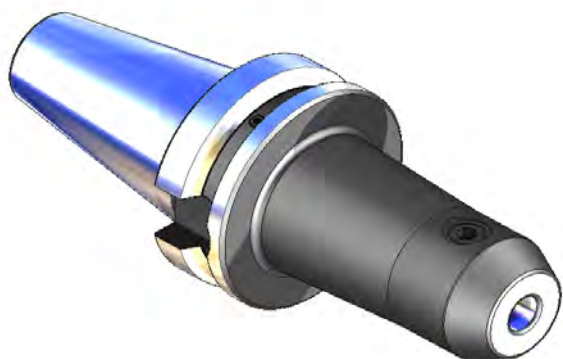
MANDRINI PORTAFRESE TIPO WELDON
 END MILL HOLDERS WELDON
 MANDRINS POUR OUTIL TYPE WELDON
 ZYLINDERSCHAFTAUFNAHME WELDON



JIS-B 6339 M.AS 403/BT .AD/B

DI N 1835 B

Bilanciato G.6,3 12.000 RPM



Codice	ISO	Descrizione	H	d	D	D3
350WE306	50	ISO50 MAS403BT WELDON H130 D.6	130	6	25	35
350WE308	50	ISO50 MAS403BT WELDON H130 D.8	130	8	28	38
350WE310	50	ISO50 MAS403BT WELDON H130 D.10	130	10	35	42
350WE312	50	ISO50 MAS403BT WELDON H130 D.12	130	12	42	48
350WE314	50	ISO50 MAS403BT WELDON H130 D.14	130	14	44	50
350WE316	50	ISO50 MAS403BT WELDON H130 D.16	130	16	48	54
350WE318	50	ISO50 MAS403BT WELDON H130 D.18	130	18	50	62
350WE320	50	ISO50 MAS403BT WELDON H130 D.20	130	20	52	66
350WE325	50	ISO50 MAS403BT WELDON H130 D.25	130	25	65	72
350WE332	50	ISO50 MAS403BT WELDON H130 D.32	130	32	72	-
350WE340	50	ISO50 MAS403BT WELDON H130 D.40	130	40	80	-

----- Secondo fattibilità, fornibili su richiesta con cono ISO 30 -----

COMPONENTI - SPARE PARTS - PIECES DETACHEES - ERSATZTEILE

Ø	GRANO	Q.tà
---	-------	------



6	100601004	1
8	100801004	1
10	101001204	1
12	101201604	1
14	101201604	1
16	101401604	1
18	101401604	1
20	101601604	1
25	101802002	2
32	102002002	2
40	102002002	2



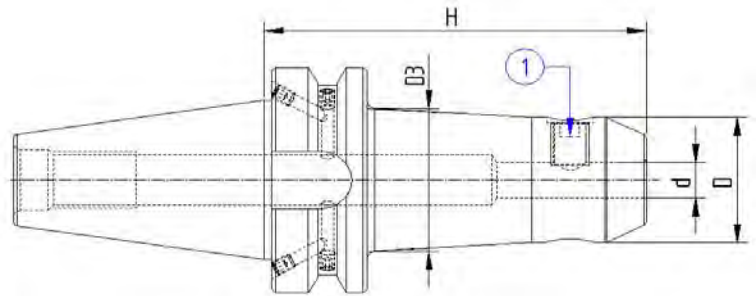
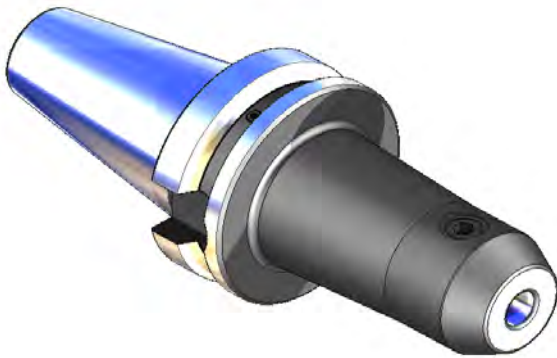
MANDRINI PORTAFRESE TIPO WELDON
 END MILL HOLDERS WELDON
 MANDRINS POUR OUTIL TYPE WELDON
 ZYLINDERSCHAFTAUFNAHME WELDON



JIS-B 6339 M.AS 403/BT .AD/B

DIN 1835 B

Bilanciato G.6,3 12.000 RPM



Codice	ISO	Descrizione	H	d	D	D3
350WE406	50	ISO50 MAS403BT WELDON H160 D.6	160	6	25	42
350WE408	50	ISO50 MAS403BT WELDON H160 D.8	160	8	28	45
350WE410	50	ISO50 MAS403BT WELDON H160 D.10	160	10	35	49
350WE412	50	ISO50 MAS403BT WELDON H160 D.12	160	12	42	55
350WE414	50	ISO50 MAS403BT WELDON H160 D.14	160	14	44	57
350WE416	50	ISO50 MAS403BT WELDON H160 D.16	160	16	48	60
350WE418	50	ISO50 MAS403BT WELDON H160 D.18	160	18	50	63
350WE420	50	ISO50 MAS403BT WELDON H160 D.20	160	20	52	69
350WE425	50	ISO50 MAS403BT WELDON H160 D.25	160	25	65	72
350WE432	50	ISO50 MAS403BT WELDON H160 D.32	160	32	72	-
350WE440	50	ISO50 MAS403BT WELDON H160 D.40	160	40	80	-

----- Secondo fattibilità, fornibili su richiesta con cono ISO 30 -----

COMPONENTI - SPARE PARTS - PIÈCES DETACHEES - ERSATZTEILE

Ø GRANO Q.tà



6	100601004	1
8	100801004	1
10	101001204	1
12	101201604	1
14	101201604	1
16	101401604	1
18	101401604	1
20	101601604	1
25	101802002	2
32	102002002	2
40	102002002	2



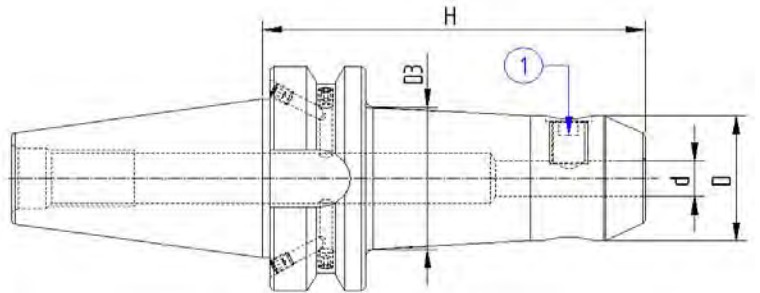
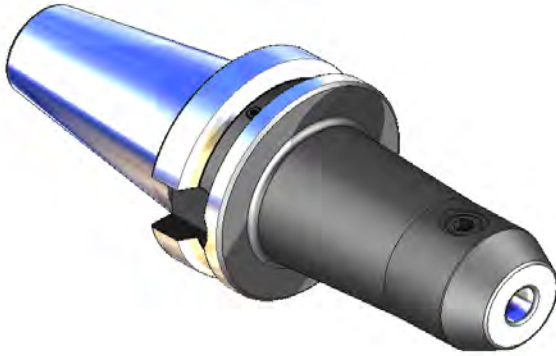
MANDRINI PORTAFRESE TIPO WELDON
 END MILL HOLDERS WELDON
 MANDRINS POUR OUTIL TYPE WELDON
 ZYLINDERSCHAFTAUFNAHME WELDON



JIS-B 6339 M.AS 403/BT .AD/B

DIN 1835 B

Bilanciato G.6,3 12.000 RPM



Codice	ISO	Descrizione	H	d	D	D3
350WE506	50	ISO50 MAS403BT WELDON H200 D.6	200	6	25	42
350WE508	50	ISO50 MAS403BT WELDON H200 D.8	200	8	28	45
350WE510	50	ISO50 MAS403BT WELDON H200 D.10	200	10	35	49
350WE512	50	ISO50 MAS403BT WELDON H200 D.12	200	12	42	55
350WE514	50	ISO50 MAS403BT WELDON H200 D.14	200	14	44	57
350WE516	50	ISO50 MAS403BT WELDON H200 D.16	200	16	48	60
350WE518	50	ISO50 MAS403BT WELDON H200 D.18	200	18	50	63
350WE520	50	ISO50 MAS403BT WELDON H200 D.20	200	20	52	69
350WE525	50	ISO50 MAS403BT WELDON H200 D.25	200	25	65	72
350WE532	50	ISO50 MAS403BT WELDON H200 D.32	200	32	72	-
350WE540	50	ISO50 MAS403BT WELDON H200 D.40	200	40	80	-

----- Secondo fattibilità, fornibili su richiesta con cono ISO 30 -----

COMPONENTI - SPARE PARTS - PIECES DETACHEES - ERSATZTEILE

Ø	GRANO	Q.tà
---	-------	------



6	100601004	1
8	100801004	1
10	101001204	1
12	101201604	1
14	101201604	1
16	101401604	1
18	101401604	1
20	101601604	1
25	101802002	2
32	102002002	2
40	102002002	2



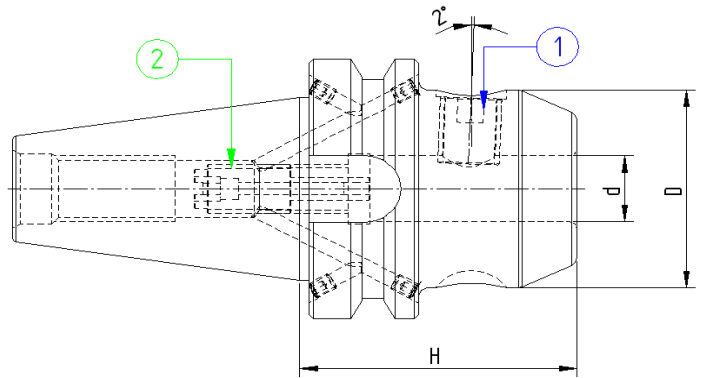
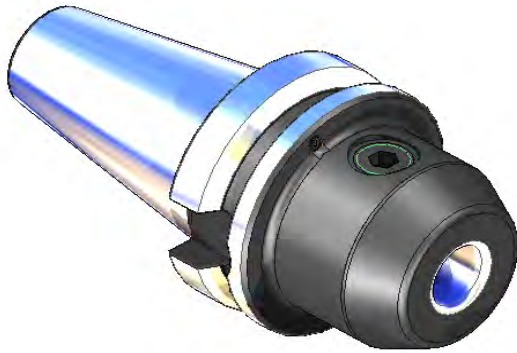
MANDRINI PORTAFRESE TIPO WHISTLE NOTCH
 END MILL HOLDERS WHISTLE NOTCH
 MANDRINS POUR OUTIL TYPE WHISTLE NOTCH
 ZYLINDERSCHAFTAUFNAHME WHISTLE NOTCH



JIS-B 6339 M.AS 403/BT .AD/B

DI N 1835 E

Bilanciato G.6,3 12.000 RPM



Codice	ISO	Descrizione	H	d	D
340WHN06	40	ISO40 MAS403BT W/NOTCH H50 D.6	50	6	25
340WHN08	40	ISO40 MAS403BT W/NOTCH H50 D.8	50	8	28
340WHN10	40	ISO40 MAS403BT W/NOTCH H63 D.10	63	10	35
340WHN12	40	ISO40 MAS403BT W/NOTCH H63 D.12	63	12	42
340WHN14	40	ISO40 MAS403BT W/NOTCH H63 D.14	63	14	44
340WHN16	40	ISO40 MAS403BT W/NOTCH H63 D.16	63	16	48
340WHN18	40	ISO40 MAS403BT W/NOTCH H63 D.18	63	18	50
340WHN20	40	ISO40 MAS403BT W/NOTCH H63 D.20	63	20	52
340WHN25	40	ISO40 MAS403BT W/NOTCH H90 D.25	90	25	65
340WHN32	40	ISO40 MAS403BT W/NOTCH H100 D.32	100	32	72
340WHN40	40	ISO40 MAS403BT W/NOTCH H105 D.40	105	40	80

----- Secondo fattibilità, fornibili su richiesta con cono ISO 30 -----

COMPONENTI - SPARE PARTS - PIECES DETACHEES - ERSATZTEILE

Ø	GRANO	Q.tà	VITE	Q.tà
---	-------	------	------	------



6	100601004	1	100504009	1
8	100801004	1	101204009	1
10	101001204	1	101204009	1
12	101201604	1	101204009	1
14	101201604	1	101204009	1
16	101401604	1	101204009	1
18	101401604	1	101204009	1
20	101601604	1	101204009	1
25	101802002	2	101204009	1
32	102002002	2	101204009	1
40	102002002	2	101204009	1



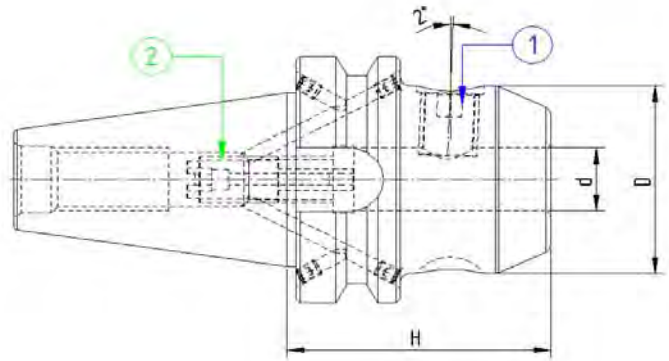
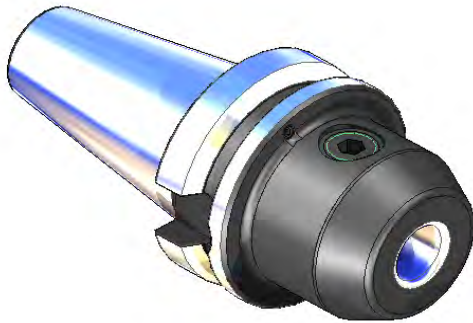
MANDRINI PORTAFRESE TIPO WHISTLE NOTCH
 END MILL HOLDERS WHISTLE NOTCH
 MANDRINS POUR OUTIL TYPE WHISTLE NOTCH
 ZYLINDERSCHAFTAUFNAHME WHISTLE NOTCH



JIS-B 6339 M.AS 403/BT .AD/B

DIN 1835 E



Bilanciato G.6,3 12.000 RPM



Codice	ISO	Descrizione	H	d	D
350WHN06	50	ISO50 MAS403BT W/NOTCH H63 D.6	63	6	25
350WHN08	50	ISO50 MAS403BT W/NOTCH H63 D.8	63	8	28
350WHN10	50	ISO50 MAS403BT W/NOTCH H70 D.10	70	10	35
350WHN12	50	ISO50 MAS403BT W/NOTCH H80 D.12	80	12	42
350WHN14	50	ISO50 MAS403BT W/NOTCH H80 D.14	80	14	44
350WHN16	50	ISO50 MAS403BT W/NOTCH H80 D.16	80	16	48
350WHN18	50	ISO50 MAS403BT W/NOTCH H80 D.18	80	18	50
350WHN20	50	ISO50 MAS403BT W/NOTCH H80 D.20	80	20	52
350WHN25	50	ISO50 MAS403BT W/NOTCH H100 D.25	100	25	65
350WHN32	50	ISO50 MAS403BT W/NOTCH H105 D.32	105	32	72
350WHN40	50	ISO50 MAS403BT W/NOTCH H120 D.40	120	40	80

----- Secondo fattibilità, fornibili su richiesta con cono ISO 30 -----

COMPONENTI - SPARE PARTS - PIECES DETACHEES - ERSATZTEILE

Ø	GRANO	Q.tà	VITE	Q.tà
				
6	100601004	1	100504009	1
8	100801004	1	101204009	1
10	101001204	1	101204009	1
12	101201604	1	101204007	1
14	101201604	1	101204007	1
16	101401604	1	101204007	1
18	101401604	1	101204007	1
20	101601604	1	101204007	1
25	101802002	2	101204007	1
32	102002002	2	101204007	1
40	102002002	2	101204007	1



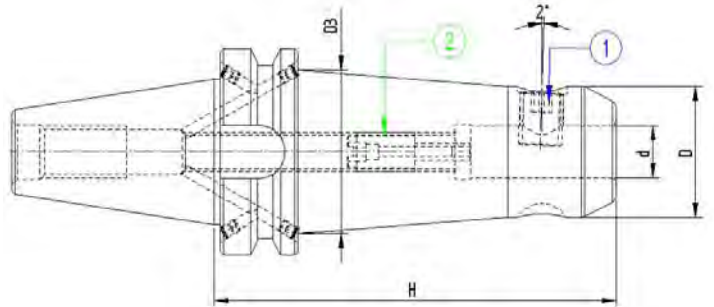
MANDRINI PORTAFRESE TIPO WHISTLE NOTCH
 END MILL HOLDERS WHISTLE NOTCH
 MANDRINS POUR OUTIL TYPE WHISTLE NOTCH
 ZYLINDERSCHAFTAUFNAHME WHISTLE NOTCH



JIS-B 6339 M.AS 403/BT .AD/B

DIN 1835 E



Bilanciato G.6,3 12.000 RPM



Codice	ISO	Descrizione	H	d	D	D3
340WN206	40	ISO40 MAS403BT W/NOTCH H100 D.06	100	6	25	35
340WN208	40	ISO40 MAS403BT W/NOTCH H100 D.08	100	8	28	38
340WN210	40	ISO40 MAS403BT W/NOTCH H100 D.10	100	10	35	40
340WN212	40	ISO40 MAS403BT W/NOTCH H100 D.12	100	12	42	-
340WN214	40	ISO40 MAS403BT W/NOTCH H100 D.14	100	14	44	-
340WN216	40	ISO40 MAS403BT W/NOTCH H100 D.16	100	16	48	-
340WN218	40	ISO40 MAS403BT W/NOTCH H100 D.18	100	18	50	-
340WN220	40	ISO40 MAS403BT W/NOTCH H100 D.20	100	20	52	-

----- Secondo fattibilità, fornibili su richiesta con cono ISO 30 -----

COMPONENTI - SPARE PARTS - PIECES DETACHEES - ERSATZTEILE

Ø	GRANO	Q.tà	VITE	Q.tà
				
6	100601004	1	100504009	1
8	100801004	1	101204009	1
10	101001204	1	101204009	1
12	101201604	1	101204007	1
14	101201604	1	101204007	1
16	101401604	1	101204007	1
18	101401604	1	101204007	1
20	101601604	1	101204007	1



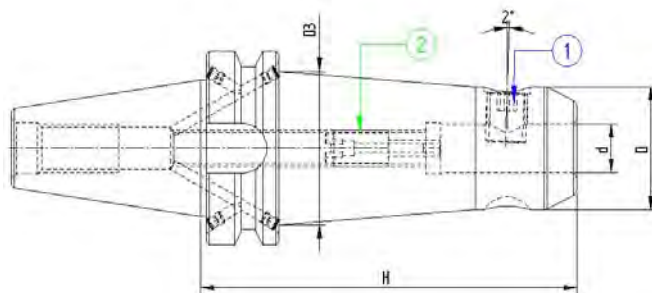
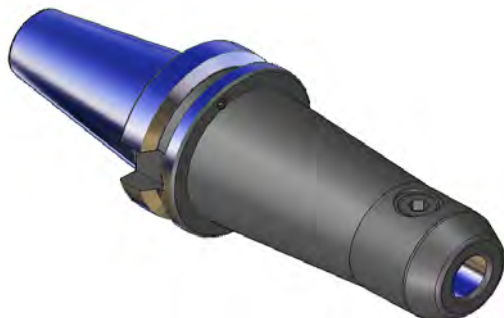
MANDRINI PORTAFRESE TIPO WHISTLE NOTCH
 END MILL HOLDERS WHISTLE NOTCH
 MANDRINS POUR OUTIL TYPE WHISTLE NOTCH
 ZYLINDERSCHAFTAUFNAHME WHISTLE NOTCH



JIS-B 6339 M.AS 403/BT .AD/B

DIN 1835 E

Bilanciato G.6,3 12.000 RPM



Codice	ISO	Descrizione	H	d	D	D3
350WN206	50	ISO50 MAS403BT W/NOTCH H100 D.06	100	6	25	35
350WN208	50	ISO50 MAS403BT W/NOTCH H100 D.08	100	8	28	38
350WN210	50	ISO50 MAS403BT W/NOTCH H100 D.10	100	10	35	42
350WN212	50	ISO50 MAS403BT W/NOTCH H100 D.12	100	12	42	48
350WN214	50	ISO50 MAS403BT W/NOTCH H100 D.14	100	14	44	50
350WN216	50	ISO50 MAS403BT W/NOTCH H100 D.16	100	16	48	54
350WN218	50	ISO50 MAS403BT W/NOTCH H100 D.18	100	18	50	62
350WN220	50	ISO50 MAS403BT W/NOTCH H100 D.20	100	20	52	66

----- Secondo fattibilità, fornibili su richiesta con cono ISO 30 -----

COMPONENTI - SPARE PARTS - PIECES DETACHEES - ERSATZTEILE

Ø	GRANO	Q.tà	VITE	Q.tà
6	100601004	1	100504009	1
8	100801004	1	101204009	1
10	101001204	1	101204009	1
12	101201604	1	101204007	1
14	101201604	1	101204007	1
16	101401604	1	101204007	1
18	101401604	1	101204007	1
20	101601604	1	101204007	1



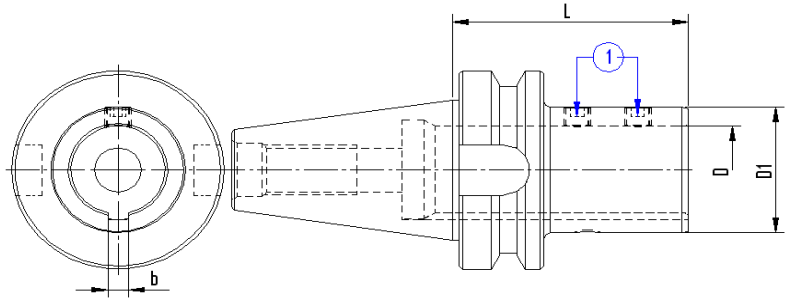
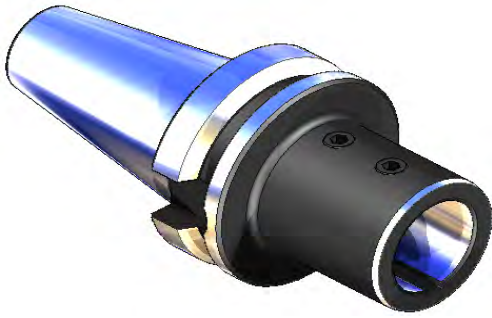
MANDRINI PER ASTUCCI REGISTRABILI
 MASTER SHANKS FOR ADJUSTABLE ADAPTORS
 MANDRINS POUR DOUILLES REGLAGE
 STELLHUELSENAUFNAHMEN



JIS-B 6339 M.AS 403/BT.AD

DI.N 6327

Bilanciato G.6,3 12.000 RPM



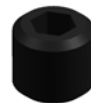
Codice	ISO	Descrizione	L	D	D1	b
340AR128	40	ISO40 MAS403BT AST.REG. H.70 D.28	70	28	40	6
340AR136	40	ISO40 MAS403BT AST.REG. H.120 D.36	120	36	50	8

Codice	ISO	Descrizione	L	D	D1	b
350AR128	50	ISO50 MAS403BT AST.REG. H.100 D.28	100	28	40	6
350AR136	50	ISO50 MAS403BT AST.REG. H.100 D.36	100	36	50	8

----- Secondo fattibilità, fornibili su richiesta con cono ISO 30 -----

COMPONENTI - SPARE PARTS - PIECES DETACHEES - ERSATZTEILE

D.	GRANO	Q.tà
28	100800604	2
36	101000604	2





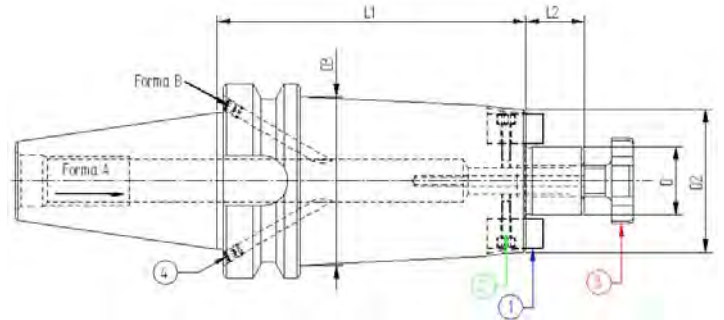
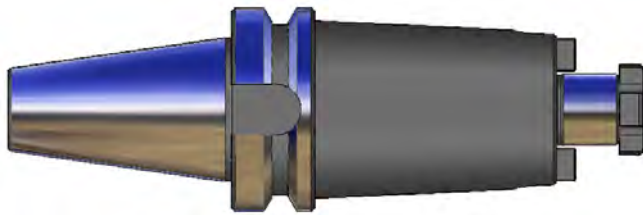
PORTAFRESE FISSI CON PASSAGGIO REFRIGERANTE
SHELL END MILL HOLDERS WITH COOLANT THROUGH PILOT
PORTE-FRAISES A SURFACE AVEC ARROSAGE
AUFSTECKFRAESERDORNE MIT KÜHLMITTELKANALEN



JIS-B 6339.M.AS 403/BT.AD/B

ISO 3937

Bilanciato G.6,3 12.000 RPM



Codice	ISO	Descrizione	L1	L2	D	D2	D3
340PF016	40	ISO40 MAS403BT P/F FISSO H35 D.16	35	17	16	46	-
340PF022	40	ISO40 MAS403BT P/F FISSO H35 D.22	35	19	22	59	-
340PF027	40	ISO40 MAS403BT P/F FISSO H35 D.27	35	21	27	58	-
340PF116	40	ISO40 MAS403BT P/F FISSO H45 D.16	45	17	16	38	-
340PF122	40	ISO40 MAS403BT P/F FISSO H45 D.22	45	19	22	48	-
340PF127	40	ISO40 MAS403BT P/F FISSO H45 D.27	45	21	27	58	-
340PF132	40	ISO40 MAS403BT P/F FISSO H50 D.32	50	24	32	78	-
340PF140	40	ISO40 MAS403BT P/F FISSO H55 D.40	55	27	40	88	-
340PF216	40	ISO40 MAS403BT P/F FISSO H100 D.16	100	17	16	39	-
340PF222	40	ISO40 MAS403BT P/F FISSO H100 D.22	100	19	22	50	59
340PF227	40	ISO40 MAS403BT P/F FISSO H100 D.27	100	21	27	55	-
340PF232	40	ISO40 MAS403BT P/F FISSO H100 D.32	100	24	32	66	-
340PF240	40	ISO40 MAS403BT P/F FISSO H100 D.40	100	27	40	70	-

----- Secondo fattibilità, fornibili su richiesta con cono ISO 30 -----

COMPONENTI - SPARE PARTS - PIECES DETACHEES - ERSATZTEILE

Codice	VITE	Q.tà	TASSELLO	Q.tà	VITE CROCE	Q.tà
16	110301001	2	916TSL01	2	916VTC02	1
22	110301201	2	922TSL01	2	922VTC02	1
27	110401601	2	927TSL01	2	927VTC02	1
32	110601601	2	932TSL01	2	932VTC02	1
40	110601601	2	940TSL01	2	940VTC02	1



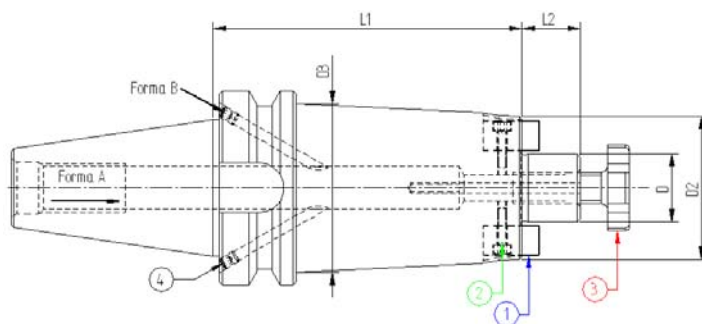
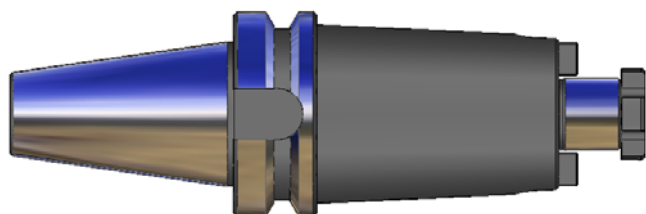
PORTAFRESE FISSI CON PASSAGGIO REFRIGERANTE
SHELL END MILL HOLDERS WITH COOLANT THROUGH PILOT
PORTE-FRAISES A SURFACE AVEC ARROSAGE
AUFSTECKFRAESERDORNE MIT KÜHLMITTELKANALEN



JIS-B 6339.MAS 403/BT.AD/B

ISO 3937

Bilanciato G.6,3 12.000 RPM



Codice	ISO	Descrizione	L1	L2	D	D2	D3
340PF316	40	ISO40 MAS403BT P/F FISSO H130 D.16	130	17	16	39	-
340PF322	40	ISO40 MAS403BT P/F FISSO H130 D.22	130	19	22	50	59
340PF327	40	ISO40 MAS403BT P/F FISSO H130 D.27	130	21	27	55	-
340PF332	40	ISO40 MAS403BT P/F FISSO H130 D.32	130	24	32	66	-
340PF340	40	ISO40 MAS403BT P/F FISSO H130 D.40	130	27	40	70	-
340PF416	40	ISO40 MAS403BT P/F FISSO H160 D.16	160	17	16	39	-
340PF422	40	ISO40 MAS403BT P/F FISSO H160 D.22	160	19	22	50	59
340PF427	40	ISO40 MAS403BT P/F FISSO H160 D.27	160	21	27	55	-
340PF432	40	ISO40 MAS403BT P/F FISSO H160 D.32	160	24	32	66	-
340PF440	40	ISO40 MAS403BT P/F FISSO H160 D.40	160	27	40	70	-
340PF516	40	ISO40 MAS403BT P/F FISSO H200 D.16	200	17	16	39	-
340PF522	40	ISO40 MAS403BT P/F FISSO H200 D.22	200	19	22	50	59
340PF527	40	ISO40 MAS403BT P/F FISSO H200 D.27	200	21	27	55	-
340PF532	40	ISO40 MAS403BT P/F FISSO H200 D.32	200	24	32	66	-
340PF540	40	ISO40 MAS403BT P/F FISSO H200 D.40	200	27	40	70	-

----- Secondo fattibilità, fornibili su richiesta con cono ISO 30 -----

COMPONENTI - SPARE PARTS - PIECES DETACHEES - ERSATZTEILE

Codice	VITE	Q.tà	TASSELLO	Q.tà	VITE CROCE	Q.tà
16	110301001	2	916TSL01	2	916VTC02	1
22	110301201	2	922TSL01	2	922VTC02	1
27	110401601	2	927TSL01	2	927VTC02	1
32	110601601	2	932TSL01	2	932VTC02	1
40	110601601	2	940TSL01	2	940VTC02	1



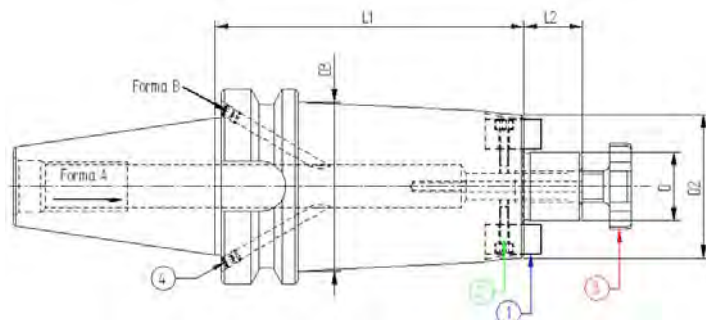
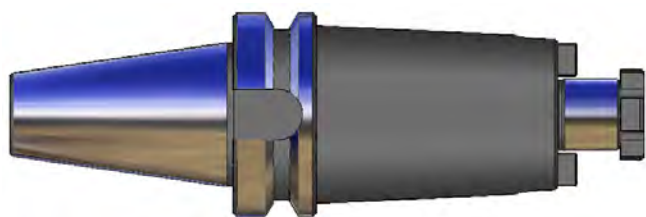
PORTAFRESE FISSI CON PASSAGGIO REFRIGERANTE
SHELL END MILL HOLDERS WITH COOLANT THROUGH PILOT
PORTE-FRAISES A SURFACE AVEC ARROSAGE
AUFSTECKFRAESERDORNE MIT KÜHLMITTELKANALEN



JIS-B 6339.MAS 403/BT.AD/B

ISO 3937

Bilanciato G.6,3 12.000 RPM



Codice	ISO	Descrizione	L1	L2	D	D2	D3
350PF016	50	ISO50 MAS403BT P/F FISSO H50 D.16	50	17	16	38	-
350PF022	50	ISO50 MAS403BT P/F FISSO H50 D.22	50	19	22	48	-
350PF027	50	ISO50 MAS403BT P/F FISSO H50 D.27	50	21	27	58	-
350PF032	50	ISO50 MAS403BT P/F FISSO H50 D.32	50	24	32	78	-
350PF040	50	ISO50 MAS403BT P/F FISSO H50 D.40	50	27	40	88	-
350PF116	50	ISO50 MAS403BT P/F FISSO H60 D.16	60	17	16	38	-
350PF122	50	ISO50 MAS403BT P/F FISSO H60 D.22	60	19	22	48	-
350PF127	50	ISO50 MAS403BT P/F FISSO H60 D.27	60	21	27	58	-
350PF132	50	ISO50 MAS403BT P/F FISSO H60 D.32	60	24	32	78	-
350PF140	50	ISO50 MAS403BT P/F FISSO H60 D.40	60	27	40	88	-
350PF216	50	ISO50 MAS403BT P/F FISSO H100 D.16	100	17	16	39	-
350PF222	50	ISO50 MAS403BT P/F FISSO H100 D.22	100	19	22	50	60
350PF227	50	ISO50 MAS403BT P/F FISSO H100 D.27	100	21	27	55	78
350PF232	50	ISO50 MAS403BT P/F FISSO H100 D.32	100	24	32	66	78
350PF240	50	ISO50 MAS403BT P/F FISSO H100 D.40	100	27	40	70	78

----- Secondo fattibilità, fornibili su richiesta con cono ISO 30 -----

COMPONENTI - SPARE PARTS - PIECES DETACHEES - ERSATZTEILE

Codice	VITE	Q.tà	TASSELLO	Q.tà	VITE CROCE	Q.tà
16	110301001	2	916TSL01	2	916VTC02	1
22	110301201	2	922TSL01	2	922VTC02	1
27	110401601	2	927TSL01	2	927VTC02	1
32	110601601	2	932TSL01	2	932VTC02	1
40	110601601	2	940TSL01	2	940VTC02	1



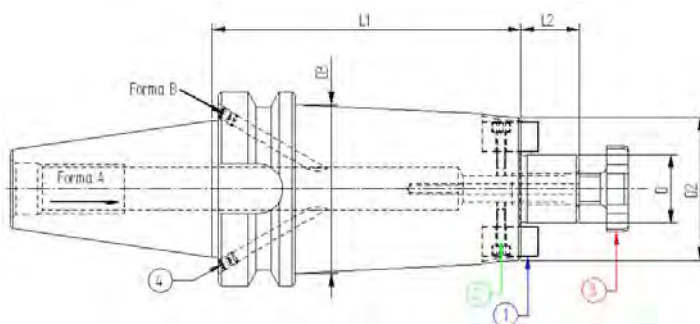
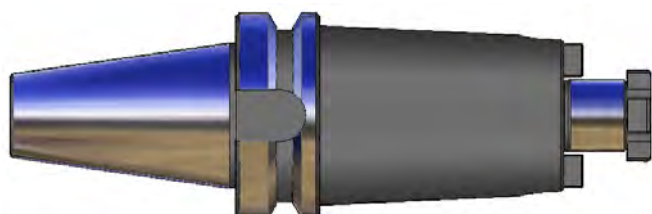
PORTAFRESE FISSI CON PASSAGGIO REFRIGERANTE
SHELL END MILL HOLDERS WITH COOLANT THROUGH PILOT
PORTE-FRAISES A SURFACE AVEC ARROSAGE
AUFSTECKFRAESERDORNE MIT KÜHLMITTELKANALEN



JIS-B 6339.MAS 403/BT.AD/B

ISO 3937




Bilanciato G.6,3 12.000 RPM



Codice	ISO	Descrizione	L1	L2	D	D2	D3
350PF316	50	ISO50 MAS403BT P/F FISSO H130 D.16	130	17	16	39	-
350PF322	50	ISO50 MAS403BT P/F FISSO H130 D.22	130	19	22	50	60
350PF327	50	ISO50 MAS403BT P/F FISSO H130 D.27	130	21	27	55	78
350PF332	50	ISO50 MAS403BT P/F FISSO H130 D.32	130	24	32	66	78
350PF340	50	ISO50 MAS403BT P/F FISSO H130 D.40	130	27	40	70	78
350PF416	50	ISO50 MAS403BT P/F FISSO H160 D.16	160	17	16	39	-
350PF422	50	ISO50 MAS403BT P/F FISSO H160 D.22	160	19	22	50	60
350PF427	50	ISO50 MAS403BT P/F FISSO H160 D.27	160	21	27	55	78
350PF432	50	ISO50 MAS403BT P/F FISSO H160 D.32	160	24	32	66	78
350PF440	50	ISO50 MAS403BT P/F FISSO H160 D.40	160	27	40	70	78
350PF516	50	ISO50 MAS403BT P/F FISSO H200 D.16	200	17	16	39	-
350PF522	50	ISO50 MAS403BT P/F FISSO H200 D.22	200	19	22	50	60
350PF527	50	ISO50 MAS403BT P/F FISSO H200 D.27	200	21	27	55	78
350PF532	50	ISO50 MAS403BT P/F FISSO H200 D.32	200	24	32	66	78
350PF540	50	ISO50 MAS403BT P/F FISSO H200 D.40	200	27	40	70	78

----- Secondo fattibilità, fornibili su richiesta con cono ISO 30 -----

COMPONENTI - SPARE PARTS - PIECES DETACHEES - ERSATZTEILE

Codice	VITE	Q.tà	TASSELLO	Q.tà	VITE CROCE	Q.tà			
16		110301001	2		916TSL01	2		916VTC02	1
22		110301201	2		922TSL01	2		922VTC02	1
27		110401601	2		927TSL01	2		927VTC02	1
32		110601601	2		932TSL01	2		932VTC02	1
40		110601601	2		940TSL01	2		940VTC02	1



PORTAFRESE FISSI CON PASSAGGIO REFRIGERANTE
SHELL END MILL HOLDERS WITH COOLANT THROUGH PILOT
PORTE-FRAISES A SURFACE AVEC ARROSAGE
AUFSTECKFRAESERDORNE MIT KÜHLMITTELKANALEN



JIS-B 6339.M.AS 403/BT.AD/B

ISO 3937

Bilanciato G.6,3 12.000 RPM

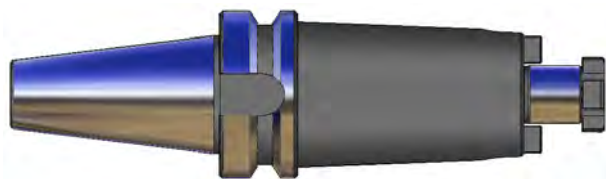


Fig. 1

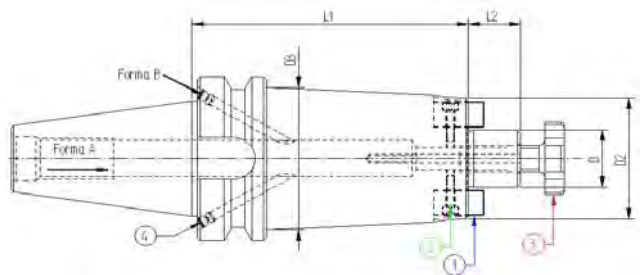
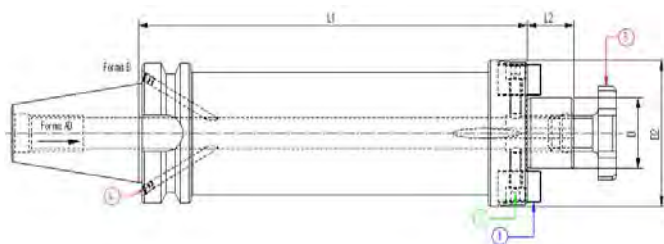



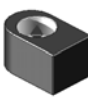

Fig. 2



Codice	ISO	Descrizione	L1	L2	d	D2	D3	Fig.
350PF616	50	ISO50 MAS403BT P/F FISSO H250 D.16	250	17	16	38	51	1
350PF622	50	ISO50 MAS403BT P/F FISSO H250 D.22	250	19	22	48	61	1
350PF627	50	ISO50 MAS403BT P/F FISSO H250 D.27	250	21	27	58	71	1
350PF632	50	ISO50 MAS403BT P/F FISSO H250 D.32	250	24	32	66	66	2
350PF640	50	ISO50 MAS403BT P/F FISSO H250 D.40	250	27	40	88	88	2
350PF716	50	ISO50 MAS403BT P/F FISSO H300 D.16	300	17	16	38	53	1
350PF722	50	ISO50 MAS403BT P/F FISSO H300 D.22	300	19	22	48	63	1
350PF727	50	ISO50 MAS403BT P/F FISSO H300 D.27	300	21	27	58	74	1
350PF732	50	ISO50 MAS403BT P/F FISSO H300 D.32	300	24	32	66	81	1
350PF740	50	ISO50 MAS403BT P/F FISSO H300 D.40	300	27	40	80	80	2
350PF816	50	ISO50 MAS403BT P/F FISSO H350 D.16	350	17	16	38	56	1
350PF822	50	ISO50 MAS403BT P/F FISSO H350 D.22	350	19	22	48	66	1
350PF827	50	ISO50 MAS403BT P/F FISSO H350 D.27	350	21	27	58	77	1
350PF832	50	ISO50 MAS403BT P/F FISSO H350 D.32	350	24	32	66	84	1
350PF840	50	ISO50 MAS403BT P/F FISSO H350 D.40	350	27	40	80	80	2

----- Secondo fattibilità, fornibili su richiesta con cono ISO 30 -----

COMPONENTI - SPARE PARTS - PIECES DETACHEES - ERSATZTEILE

Codice	VITE	Q.tà	TASSELLO	Q.tà	VITE CROCE	Q.tà
						
16	110301001	2	916TSL01	2	916VTC02	1
22	110301201	2	922TSL01	2	922VTC02	1
27	110401601	2	927TSL01	2	927VTC02	1
32	110601601	2	932TSL01	2	932VTC02	1
40	110601601	2	940TSL01	2	940VTC02	1



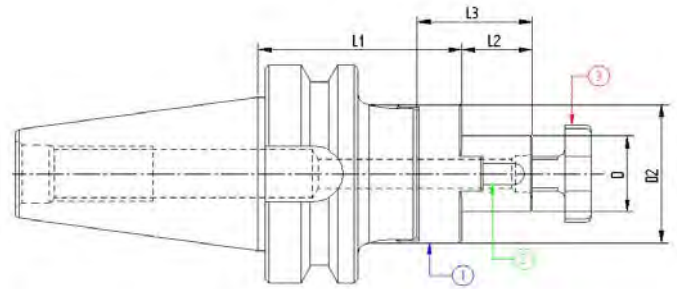
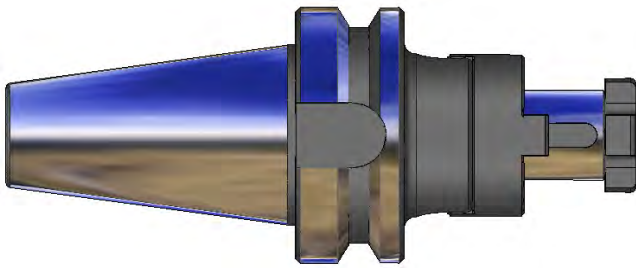
MANDRINI PORTAFRESE COMBINATI
 KOMBI-SHELL MILL ADAPTOR
 MANDRINS PORTE-FRAISES A DOUBLE USAGE
 KOMBI AUFSTECKFRESORNE



JIS-B 6339 M.AS 403/BT.A

DIN 6358

Bilanciato G.6,3 12.000 RPM



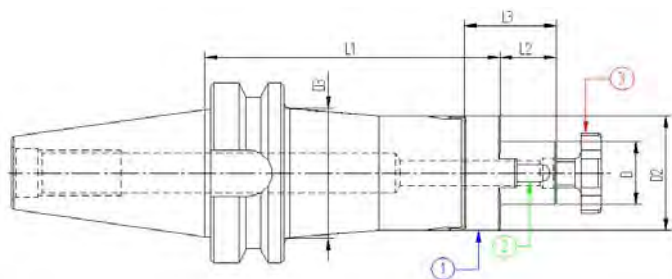
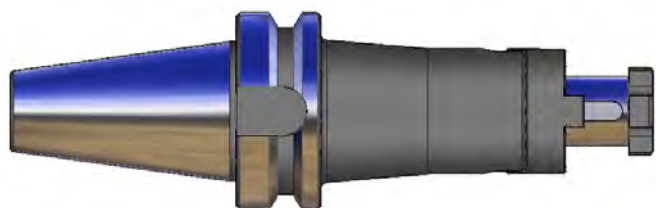
Codice	ISO	Descrizione	L1	L2	L3	D	D2
340PU116	40	ISO40 MAS403BT P/F UNIVERS.H55 D.16	55	17	27	16	32
340PU122	40	ISO40 MAS403BT P/F UNIVERS.H55 D.22	55	19	31	22	40
340PU127	40	ISO40 MAS403BT P/F UNIVERS.H55 D.27	55	21	33	27	48
340PU132	40	ISO40 MAS403BT P/F UNIVERS.H60 D.32	60	24	38	32	58
340PU140	40	ISO40 MAS403BT P/F UNIVERS.H60 D.40	60	27	41	40	70

----- Secondo fattibilità, fornibili su richiesta con cono ISO 30 -----

COMPONENTI - SPARE PARTS - PIECES DETACHEES - ERSATZTEILE

Ø	GIUNTO	Q.tà	LINGUETTA	Q.tà	VITE CROCE	Q.tà
16	916GNT01	1	170402004	1	916VTC02	1
22	922GNT01	1	170602506	1	922VTC02	1
27	927GNT01	1	170702507	1	927VTC02	1
32	932GNT01	1	170802807	1	932VTC02	1
40	940GNT01	1	171003208	1	940VTC02	1

Bilanciato G.6,3 12.000 RPM



Codice	ISO	Descrizione	L1	L2	L3	D	D2	D3
340PU216	40	ISO40 MAS403BT P/F UNIVERS.H100 D.16	100	17	27	16	32	44
340PU222	40	ISO40 MAS403BT P/F UNIVERS.H100 D.22	100	19	31	22	40	-
340PU227	40	ISO40 MAS403BT P/F UNIVERS.H100 D.27	100	21	33	27	48	-
340PU232	40	ISO40 MAS403BT P/F UNIVERS.H100 D.32	100	24	38	32	58	-
340PU240	40	ISO40 MAS403BT P/F UNIVERS.H100 D.40	100	27	41	40	70	-
340PU316	40	ISO40 MAS403BT P/F UNIVERS. H130 D.16	130	17	27	16	32	39
340PU322	40	ISO40 MAS403BT P/F UNIVERS. H130 D.22	130	19	31	22	40	47
340PU327	40	ISO40 MAS403BT P/F UNIVERS. H130 D.27	130	21	33	27	48	56
340PU332	40	ISO40 MAS403BT P/F UNIVERS. H130 D.32	130	24	38	32	58	58
340PU340	40	ISO40 MAS403BT P/F UNIVERS. H130 D.40	130	27	41	40	70	53
340PU416	40	ISO40 MAS403BT P/F UNIVERS. H160 D.16	160	17	27	16	32	39
340PU422	40	ISO40 MAS403BT P/F UNIVERS. H160 D.22	160	19	31	22	40	40
340PU427	40	ISO40 MAS403BT P/F UNIVERS. H160 D.27	160	21	33	27	48	48
340PU432	40	ISO40 MAS403BT P/F UNIVERS. H160 D.32	160	24	38	32	58	58
340PU440	40	ISO40 MAS403BT P/F UNIVERS. H160 D.40	160	27	41	40	70	53
340PU516	40	ISO40 MAS403BT P/F UNIVERS. H200 D.16	200	17	27	16	32	42
340PU522	40	ISO40 MAS403BT P/F UNIVERS. H200 D.22	200	19	31	22	40	50
340PU527	40	ISO40 MAS403BT P/F UNIVERS. H200 D.27	200	21	33	27	48	48
340PU532	40	ISO40 MAS403BT P/F UNIVERS. H200 D.32	200	24	38	32	58	58
340PU540	40	ISO40 MAS403BT P/F UNIVERS. H200 D.40	200	27	41	40	70	53

----- Secondo fattibilità, fornibili su richiesta con cono ISO 30 -----

COMPONENTI - SPARE PARTS - PIECES DETACHEES - ERSATZTEILE

Ø	GIUNTO	Q.tà	LINGUETTA	Q.tà	VITE CROCE	Q.tà
16	916GNT01	1	170402004	1	916VTC02	1
22	922GNT01	1	170602506	1	922VTC02	1
27	927GNT01	1	170702507	1	927VTC02	1
32	932GNT01	1	170802807	1	932VTC02	1
40	940GNT01	1	171003208	1	940VTC02	1



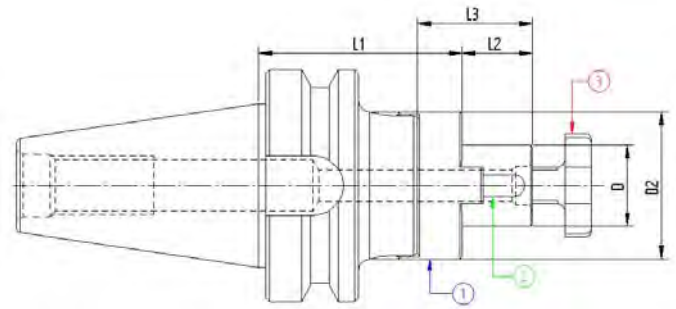
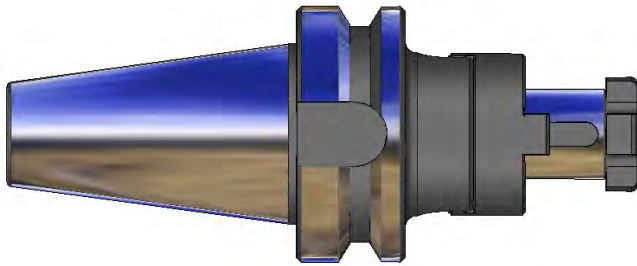
MANDRINI PORTAFRESE COMBINATI
 KOMBI-SHELL MILL ADAPTOR
 MANDRINS PORTE-FRAISES A DOUBLE USAGE
 KOMBI AUFSTECKFRESORNE



JIS-B 6339 M.AS 403/BT.A

DI.N 6358

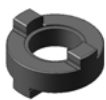


Bilanciato G.6,3 12.000 RPM



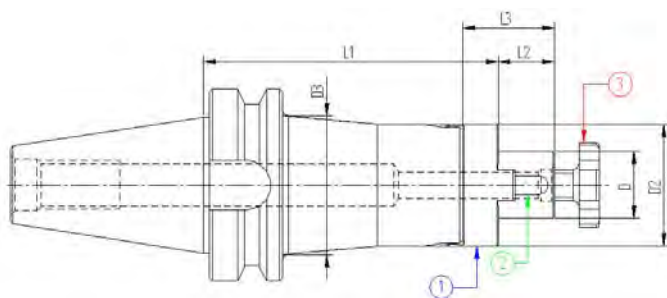
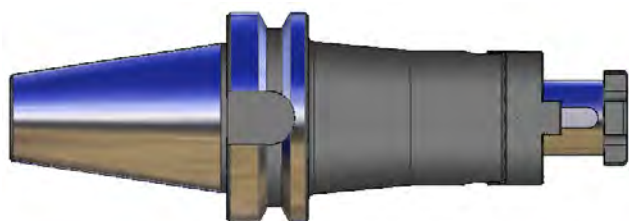
Codice	ISO	Descrizione	L1	L2	L3	D	D2
350PU116	50	ISO50 MAS403BT P/F UNIVERS. H70 D.16	70	17	27	16	32
350PU122	50	ISO50 MAS403BT P/F UNIVERS. H70 D.22	70	19	31	22	40
350PU127	50	ISO50 MAS403BT P/F UNIVERS. H70 D.27	70	21	33	27	48
350PU132	50	ISO50 MAS403BT P/F UNIVERS. H70 D.32	70	24	38	32	58
350PU140	50	ISO50 MAS403BT P/F UNIVERS. H70 D.40	70	27	41	40	70

----- Secondo fattibilità, fornibili su richiesta con cono ISO 30 -----

COMPONENTI - SPARE PARTS - PIECES DETACHEES - ERSATZTEILE

Ø	GIUNTO	Q.tà	LINGUETTA	Q.tà	VITE CROCE	Q.tà
16		1		1		1
22	916GNT01	1	170402004	1	916VTC02	1
27	922GNT01	1	170602506	1	922VTC02	1
32	927GNT01	1	170702507	1	927VTC02	1
40	932GNT01	1	170802807	1	932VTC02	1
	940GNT01	1	171003208	1	940VTC02	1

Bilanciato G.6,3 12.000 RPM



Codice	ISO	Descrizione	L1	L2	L3	D	D2	D3
350PU216	50	ISO50 MAS403BT P/F UNIVERS. H100 D.16	100	17	27	16	32	44
350PU222	50	ISO50 MAS403BT P/F UNIVERS. H100 D.22	100	19	31	22	40	50
350PU227	50	ISO50 MAS403BT P/F UNIVERS. H100 D.27	100	21	33	27	48	60
350PU232	50	ISO50 MAS403BT P/F UNIVERS. H100 D.32	100	24	38	32	58	-
350PU240	50	ISO50 MAS403BT P/F UNIVERS. H100 D.40	100	27	41	40	70	-
350PU316	50	ISO50 MAS403BT P/F UNIVERS. H130 D.16	130	17	27	16	32	44
350PU322	50	ISO50 MAS403BT P/F UNIVERS. H130 D.22	130	19	31	22	40	50
350PU327	50	ISO50 MAS403BT P/F UNIVERS. H130 D.27	130	21	33	27	48	60
350PU332	50	ISO50 MAS403BT P/F UNIVERS. H130 D.32	130	24	38	32	58	65
350PU340	50	ISO50 MAS403BT P/F UNIVERS. H130 D.40	130	27	41	40	70	77
350PU416	50	ISO50 MAS403BT P/F UNIVERS. H160 D.16	160	17	27	16	32	44
350PU422	50	ISO50 MAS403BT P/F UNIVERS. H160 D.22	160	19	31	22	40	50
350PU427	50	ISO50 MAS403BT P/F UNIVERS. H160 D.27	160	21	33	27	48	60
350PU432	50	ISO50 MAS403BT P/F UNIVERS. H160 D.32	160	24	38	32	58	66
350PU440	50	ISO50 MAS403BT P/F UNIVERS. H160 D.40	160	27	41	40	70	78
350PU516	50	ISO50 MAS403BT P/F UNIVERS. H200 D.16	200	17	27	16	32	44
350PU522	50	ISO50 MAS403BT P/F UNIVERS. H200 D.22	200	19	31	22	40	50
350PU527	50	ISO50 MAS403BT P/F UNIVERS. H200 D.27	200	21	33	27	48	60
350PU532	50	ISO50 MAS403BT P/F UNIVERS. H200 D.32	200	24	38	32	58	68
350PU540	50	ISO50 MAS403BT P/F UNIVERS. H200 D.40	200	27	41	40	70	78

----- Secondo fattibilità, fornibili su richiesta con cono ISO 30 -----

COMPONENTI - SPARE PARTS - PIECES DETACHEES - ERSATZTEILE

Ø	GIUNTO	Q.tà	LINGUETTA	Q.tà	VITE CROCE	Q.tà			
16		916GNT01	1		170402004	1		916VTC02	1
22		922GNT01	1		170602506	1		922VTC02	1
27		927GNT01	1		170702507	1		927VTC02	1
32		932GNT01	1		170802807	1		932VTC02	1
40		940GNT01	1		171003208	1		940VTC02	1



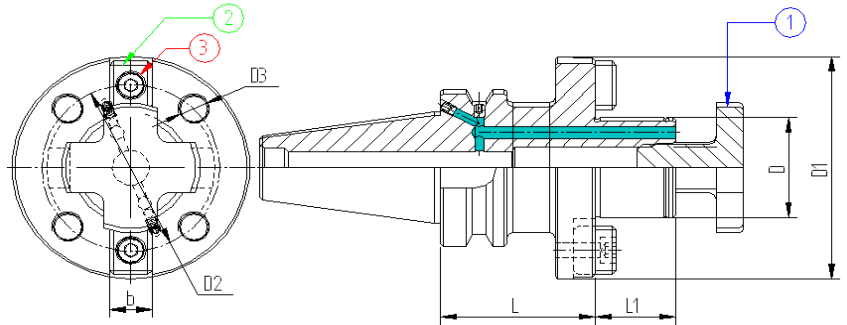
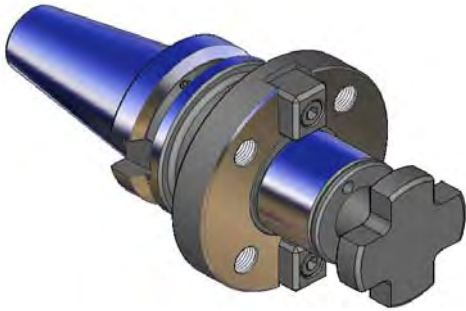
MANDRINI PORTAFRESE PER FRESE A SPIANARE
 FACE MILL HOLDER FOR FACE MILLING CUTTERS
 MANDRINS PORTE-FRAISE POUR FRAISES A SURFACER
 AUFSTECKFRAESERDORNE FUER MESSERKOEPE



JIS-B 6339 M.AS 403/BT.A

DI.N 6357


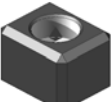

Bilanciato G.6,3 12.000 RPM



Codice	ISO	Descrizione	L	L1	D	D1	b	D2	D3
340PI140	40	ISO40 MAS403BT P/F TRA.FR.H.60 D40FM	60	30	40	89	15,9	66,7	M12
350PI140	50	ISO50 MAS403BT P/F TRA.FR.H70 D40FM	70	30	40	89	15,9	66,7	M12
350PI160	50	ISO50 MAS403BT P/F TRA.FR.H80 D60FM	80	40	60	129	25,4	101,6	M12

----- Secondo fattibilità, fornibili su richiesta con cono ISO 30 -----

COMPONENTI - SPARE PARTS - PIECES DETACHEES - ERSATZTEILE

Codice	VITE	Q.tà	TASSELLO	Q.tà	VITE CROCE	Q.tà
						
40	110601601	2	940TSL04	2	940VTC02	1
60	111202501	2	960TSL04	2	-	-



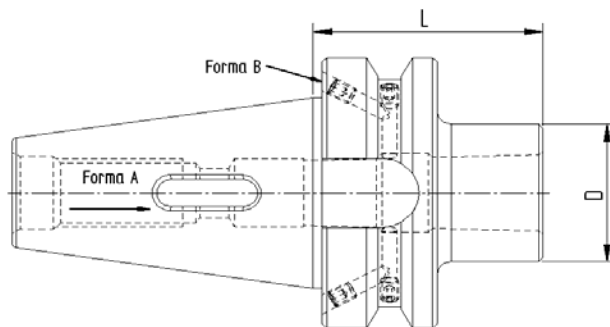
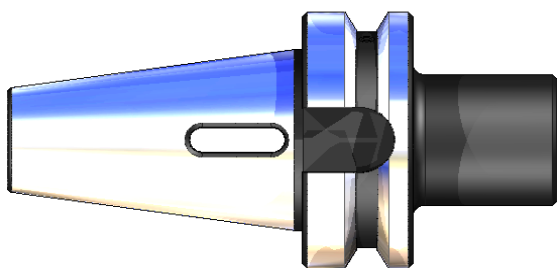
MANDRINI PORTAPUNTE-FRESE ATTACCO CONO MORSE
 MORSE TAPER ADAPTORS FOR DRILL AND MILLS
 DOUILLES POUR CONE MORSE A TENON ET AVEC TARAUDAGE
 ZWISCHENHULSEN FÜR MORSEKEGEL MIT AUSTREIBLAPPEN ODER ANZUGSGWINDE



JIS-B 6339 MAS 403/BT.A

DIN 228-2

Bilanciato G.6,3 12.000 RPM



Codice	ISO	Descrizione	L	D
340MP101	40	ISO40 MAS403BT H50 CM1 PUNTE	50	25
340MP102	40	ISO40 MAS403BT H50 CM2 PUNTE	50	32
340MP103	40	ISO40 MAS403BT H70 CM3 PUNTE	70	40
340MP104	40	ISO40 MAS403BT H95 CM4 PUNTE	95	48
350MP101	50	ISO50 MAS403BT H45 CM1 PUNTE	45	25
350MP102	50	ISO50 MAS403BT H60 CM2 PUNTE	60	32
350MP103	50	ISO50 MAS403BT H65 CM3 PUNTE	65	40
350MP104	50	ISO50 MAS403BT H95 CM4 PUNTE	95	48
350MP105	50	ISO50 MAS403BT H105 CM5 PUNTE	105	63

----- Secondo fattibilità, fornibili su richiesta con cono ISO 30 -----

COMPONENTI - SPARE PARTS - PIECES DETACHEES - ERSATZTEILE

TIPO	VITE	Q.tà
------	------	------



CM1	110604501	1
CM2	111004501	1
CM3	111205501	1
CM4	111606015	1
CM5	-	1

**VITI FORNITE SOLO
 NEL CASO DI
 MANDRINO
 COMBINATO**



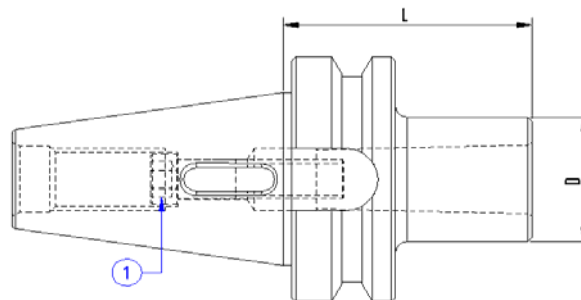
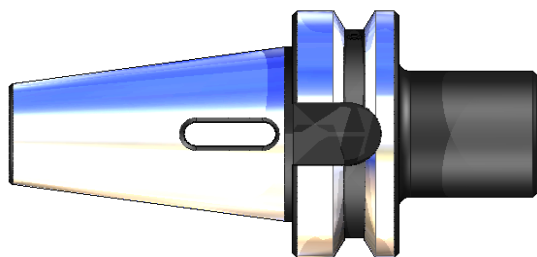
MANDRINI PORTAPUNTE-FRESE ATTACCO CONO MORSE
 MORSE TAPER ADAPTORS FOR DRILL AND MILLS
 DOUILLES POUR CONE MORSE A TENON ET AVEC TARAUDAGE
 ZWISCHENHULSEN FÜR MORSEKEGEL MIT AUSTREIBLAPPEN ODER ANZUGSGEWINDE



JIS-B 6339 M.AS 403/BT.A

DIN 228-2

Bilanciato G.6,3 12.000 RPM



Codice	ISO	Descrizione	L	D
340MP201	40	ISO40 MAS403BT H120 CM1 PUNTE	120	25
340MP202	40	ISO40 MAS403BT H120 CM2 PUNTE	120	32
340MP203	40	ISO40 MAS403BT H135 CM3 PUNTE	135	40
340MP204	40	ISO40 MAS403BT H165 CM4 PUNTE	165	48
350MP201	50	ISO50 MAS403BT H120 CM1 PUNTE	120	25
350MP202	50	ISO50 MAS403BT H135 CM2 PUNTE	135	32
350MP203	50	ISO50 MAS403BT H155 CM3 PUNTE	155	40
350MP204	50	ISO50 MAS403BT H180 CM4 PUNTE	180	48
350MP205	50	ISO50 MAS403BT H215 CM5 PUNTE	215	63

----- Secondo fattibilità, fornibili su richiesta con cono ISO 30 -----

COMPONENTI - SPARE PARTS - PIECES DETACHEES - ERSATZTEILE

TIPO	VITE	Q.tà
------	------	------



CM1	110604501	1
CM2	111004501	1
CM3	111205501	1
CM4	111606015	1
CM5	-	1

**VITI FORNITE SOLO
 NEL CASO DI
 MANDRINO
 COMBINATO**



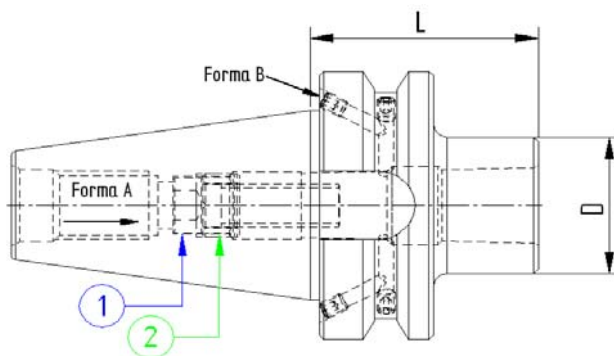
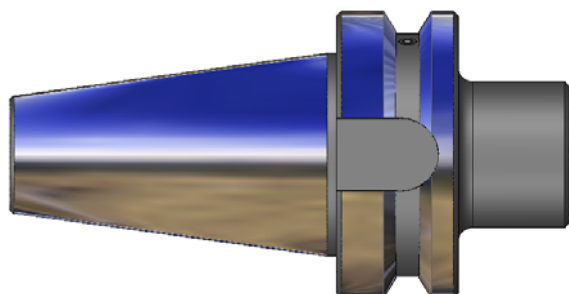
MANDRINI PORTAFRESE ATTACCO CONO MORSE
 MORSE TAPER ADAPTER WITH TREAD
 DOUILLES POUR CONE MORSE AVEC TARAUDAGE
 SPANFUTTER FUER EIN SCHRAUBFRAESER



JIS-B 6339 M.AS 403/BT.A

DIN 228-2



Bilanciato G.6,3 12.000 RPM



Codice	ISO	Descrizione	L	D
340MF101	40	ISO40 MAS403BT H50 CM1 FRESE	50	25
340MF102	40	ISO40 MAS403BT H50 CM2 FRESE	50	32
340MF103	40	ISO40 MAS403BT H70 CM3 FRESE	70	40
340MF104	40	ISO40 MAS403BT H95 CM4 FRESE	95	48
350MF101	50	ISO50 MAS403BT H50 CM1 FRESE	50	25
350MF102	50	ISO50 MAS403BT H50 CM2 FRESE	50	32
350MF103	50	ISO50 MAS403BT H65 CM3 FRESE	65	40
350MF104	50	ISO50 MAS403BT H95 CM4 FRESE	95	48
350MF105	50	ISO50 MAS403BT H100 CM5 FRESE	100	63

----- Secondo fattibilità, fornibili su richiesta con cono ISO 30 -----

COMPONENTI - SPARE PARTS - PIECES DETACHEES - ERSATZTEILE

TIPO	VITE	Q.tà	GHIERA	Q.tà
				
CM1	110603501	1	-	-
CM2	111003014	1	121500802	1
CM3	111204003	1	122000903	1
CM4	111604514	1	122501204	1
CM5	112005003	1	123301205	1



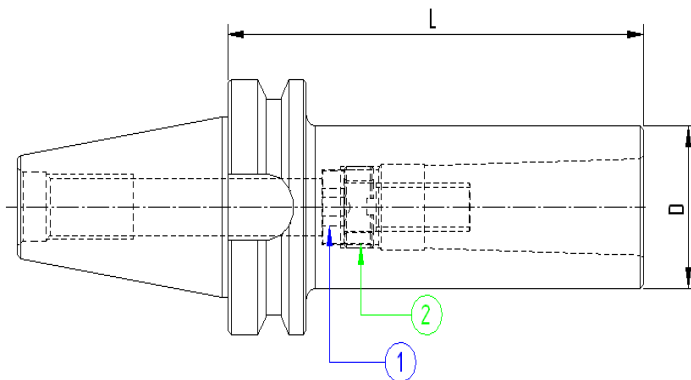
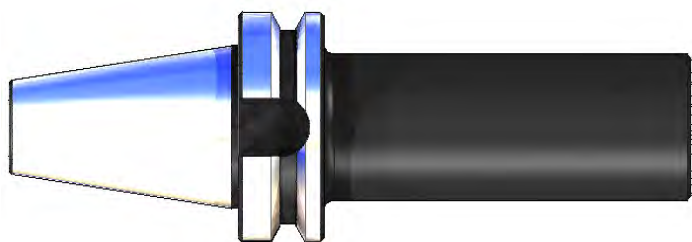
MANDRINI PORTAFRESE ATTACCO CONO MORSE
 MORSE TAPER ADAPTER WITH TREAD
 DOUILLES POUR CONE MORSE AVEC TARAUDAGE
 SPANFUTTER FUER EIN SCHRAUBFRAESER



JIS-B 6339 M.AS 403/BT.A

DIN 228-2



Bilanciato G.6,3 12.000 RPM



Codice	ISO	Descrizione	L	D
340MF201	40	ISO40 MAS403BT H120 CM1 FRESE	120	25
340MF202	40	ISO40 MAS403BT H120 CM2 FRESE	120	32
340MF203	40	ISO40 MAS403BT H135 CM3 FRESE	135	40
340MF204	40	ISO40 MAS403BT H165 CM4 FRESE	165	48
350MF201	50	ISO50 MAS403BT H185 CM1 FRESE	185	25
350MF202	50	ISO50 MAS403BT H185 CM2 FRESE	185	32
350MF203	50	ISO50 MAS403BT H185 CM3 FRESE	185	40
350MF204	50	ISO50 MAS403BT H185 CM4 FRESE	185	48
350MF205	50	ISO50 MAS403BT H200 CM5 FRESE	200	63

----- Secondo fattibilità, fornibili su richiesta con cono ISO 30 -----

COMPONENTI - SPARE PARTS - PIECES DETACHEES - ERSATZTEILE

TIPO	VITE	Q.tà	GHIERA	Q.tà
				
CM1	110603501	1	-	-
CM2	111003014	1	121500802	1
CM3	111204003	1	122000903	1
CM4	111604514	1	122501204	1
CM5	112005003	1	123301205	1

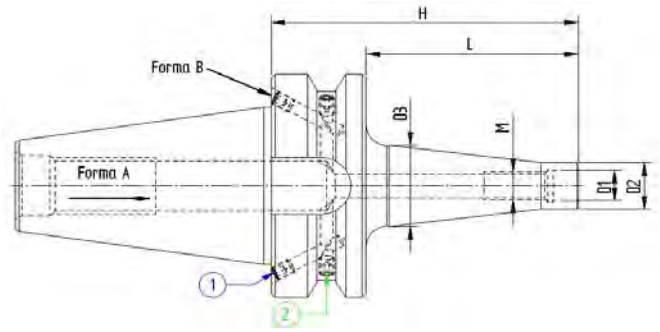
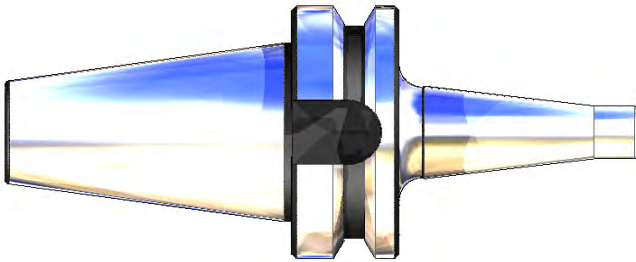


MANDRINI PER FRESE CON ATTACCO FILETTATO
 MILLING CUTTER ARBORS FOR SCREW-ON TYPE MILLING CUTTERS
 MANDRINS POUR FRAISER A VISSER
 SPANFUTTER FUER EINSCHRAUBFRAESER



JIS-B 6339.M.AS 403/BT.AD/B

Bilanciato G.2,5 20.000 RPM



Codice	ISO	Descrizione	H	L	D3	M	D1	D2
340AF106	40	ISO40 MAS403BT P/F ATT.FILET. M6x63	63	36	13	M6	6,5	9,7
340AF108	40	ISO40 MAS403BT P/F ATT.FILET. M8x63	63	36	15	M8	8,5	13
340AF110	40	ISO40 MAS403BT P/F ATT.FILET.M10x63	63	36	19,5	M10	10,5	18
340AF112	40	ISO40 MAS403BT P/F ATT.FILET.M12x63	63	36	24	M12	12,5	21
340AF116	40	ISO40 MAS403BT P/F ATT.FILET.M16x63	63	36	34	M16	17	29
340AF206	40	ISO40 MAS403BT P/F ATT.FILET. M6x83	83	56	20	M6	6,5	9,7
340AF208	40	ISO40 MAS403BT P/F ATT.FILET. M8x83	83	56	23	M8	8,5	13
340AF210	40	ISO40 MAS403BT P/F ATT.FILET.M10x83	83	56	25	M10	10,5	18
340AF212	40	ISO40 MAS403BT P/F ATT.FILET.M12x83	83	56	24	M12	12,5	21
340AF216	40	ISO40 MAS403BT P/F ATT.FILET.M16x83	83	56	34	M16	17	29
340AF308	40	ISO40 MAS403BT P/F ATT.FILET. M8x103	103	76	23	M8	8,5	13
340AF310	40	ISO40 MAS403BT P/F ATT.FILET.M10x103	103	76	28	M10	10,5	18
340AF312	40	ISO40 MAS403BT P/F ATT.FILET.M12x103	103	76	31	M12	12,5	21
340AF316	40	ISO40 MAS403BT P/F ATT.FILET.M16x103	103	76	34	M16	17	29
340AF410	40	ISO40 MAS403BT P/F ATT.FILET.M10x123	123	96	28	M10	10,5	18
340AF412	40	ISO40 MAS403BT P/F ATT.FILET.M12x123	123	96	31	M12	12,5	21
340AF416	40	ISO40 MAS403BT P/F ATT.FILET.M16x123	123	96	39	M16	17	29
340AF516	40	ISO40 MAS403BT P/F ATT.FILET.M16x153	153	126	39	M16	17	29

----- Secondo fattibilità, fornibili su richiesta con cono ISO 30 -----

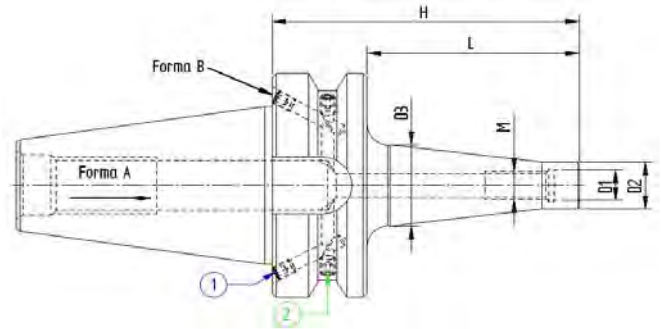
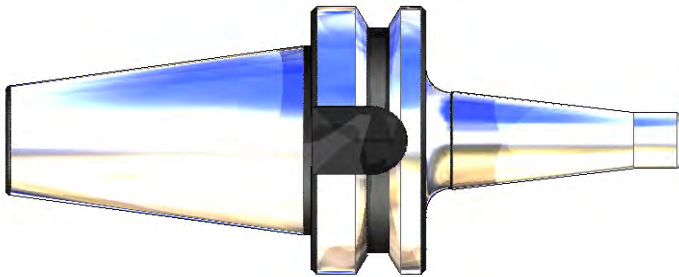


MANDRINI PER FRESE CON ATTACCO FILETTATO
 MILLING CUTTER ARBORS FOR SCREW-ON TYPE MILLING CUTTERS
 MANDRINS POUR FRAISER A VISSER
 SPANFUTTER FUER EINSCHRAUBFRAESER



JIS-B 6339 M.AS 403/BT.A

Bilanciato G.2,5 20.000 RPM



Codice	ISO	Descrizione	H	L	D3	M	D1	D2
350AF112	50	ISO50 MAS403BT P/F ATT.FILET.M12x64	64	26	24	M12	12,5	21
350AF116	50	ISO50 MAS403BT P/F ATT.FILET.M16x64	64	26	34	M16	17	29
350AF212	50	ISO50 MAS403BT P/F ATT.FILET.M12x104	104	66	32	M12	12,5	21
350AF216	50	ISO50 MAS403BT P/F ATT.FILET.M16x104	104	66	36	M16	17	29
350AF312	50	ISO50 MAS403BT P/F ATT.FILET.M12x154	154	116	32	M12	12,5	21
350AF316	50	ISO50 MAS403BT P/F ATT.FILET.M16X154	154	116	40	M16	17	29
350AF412	50	ISO50 MAS403BT P/F ATT.FILET.M12X204	204	166	36	M12	12,5	21
350AF416	50	ISO50 MAS403BT P/F ATT.FILET.M16x204	204	166	42	M16	17	29
350AF512	50	ISO50 MAS403BT P/F ATT.FILET.M12x254	254	216	42	M12	12,5	21
350AF516	50	ISO50 MAS403BT P/F ATT.FILET.M16x254	254	216	44	M16	17	29

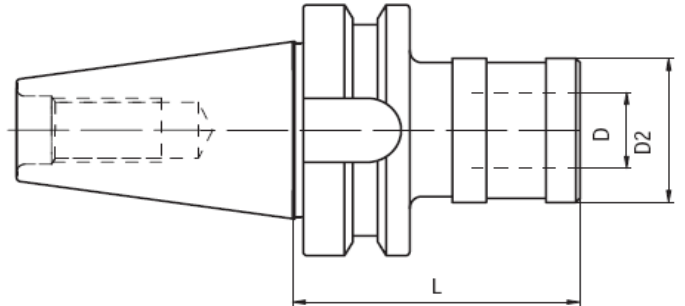
----- Secondo fattibilità, fornibili su richiesta con cono ISO 30 -----



MANDRINI PORTAMASCHI A CAMBIO RAPIDO
 QUICK CHANGE TAP HOLDER
 MANDRINS DE TARAUDAGE A CHANGEMENT RAPID
 GEWINDE -SCHNELLWECHSELFUTTER



JIS-B 6339 M.AS 403/BT.AD/B



Codice	ISO	Descrizione	L	D	D2
340PCRM1	40	ISO40 MAS403BT M/PORTAM/C/R L67 GR.1	67	19	38
340PCRM2	40	ISO40 MAS403BT M/PORTAM/C/R L93 GR.2	93	31	54
350PCRM1	50	ISO50 MAS403BT M/PORTAM/C/R L80 GR.1	80	19	38
350PCRM2	50	ISO50 MAS403BT M/PORTAM/C/R L102 GR.2	102	31	54

----- Secondo fattibilità, fornibili su richiesta con cono ISO 30 -----

ACCESSORI - ACCESSORIES - ACCESSOIRES - ZUBEHOR



RIF. PAGINA **298**



RIF. PAGINA **299**

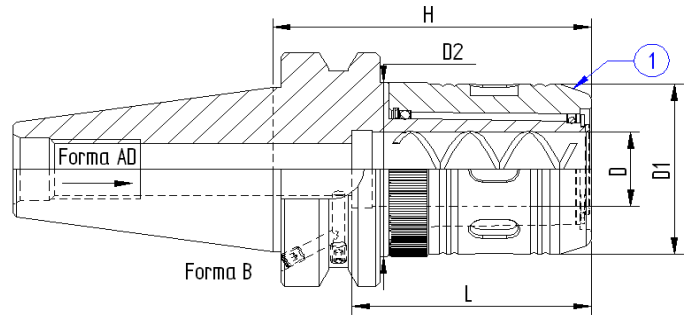


MANDRINI A FORTE SERRAGGIO
MILLING CHUCK
MANDRINS A FORT SERRAGE
KRAFTSPANNFUTTER



JIS-B 6339 M.AS 403/BT.AD/B

Bilanciato G.6,3 12.000 RPM



Codice	ISO	Descrizione	H	L	D	D1	D2
340FS120	40	ISO40 MAS403BT F. SERR. Ø20 H80	80	60	20	46	47
340FS132	40	ISO40 MAS403BT F. SERR. Ø32 H85	85	80	32	62	63
340FS332	40	ISO40 MAS403BT F. SERR. Ø32 H135	135	80	32	62	63

Codice	ISO	Descrizione	H	L	D	D1	D2
350FS220	50	ISO50 MAS403BT F. SERR. Ø20 H100	100	60	20	46	47
350FS232	50	ISO50 MAS403BT F. SERR. Ø32 H100	100	80	32	62	63
350FS332	50	ISO50 MAS403BT F. SERR. Ø32 H135	135	80	32	62	63

----- Secondo fattibilità, fornibili su richiesta con cono ISO 30 -----

ACCESSORI - ACCESSORIES - ACCESSOIRES - ZUBEHÖR

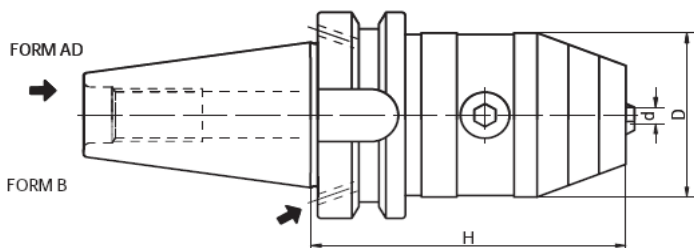




MANDRINI PORTAPUNTE INTEGRALI PER ROTAZIONE DX E SX
 NC DRILL CHUCKS FOR LEFT AND RIGHT ROTATION
 MANDRIN DE PERÇAGE CNC POUR ROTATION GAUCHE-DROITE
 NC-BOHRFUTTER FUER RECHTS-UND LINKSLAUF



JIS-B 6339.M.AS 403/BT.AD/B

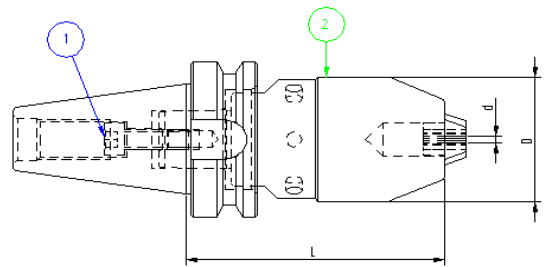


**CON REFRIGERANTE CENTRALE - WITH INTERNAL COOLANT SUPPLY -
 AVEC ARROSAGE INTERNE - MIT ZENTRALEM KÜHLMITTELLOCH**

Codice	ISO	Descrizione	H	D	d
340MAZ13	40	ISO40 MAS403BT M/AUTOS./FORI H90 D13	90	50	1-13
340MAZ16	40	ISO40 MAS403BT M/AUTOS./FORI H95 D16	95	57	3-16
Codice	ISO	Descrizione	H	D	d
350MAZ13	50	ISO50 MAS403BT M/AUTOS./FORI H90 D13	90	50	1-13
350MAZ16	50	ISO50 MAS403BT M/AUTOS./FORI H95 D16	95	57	3-16

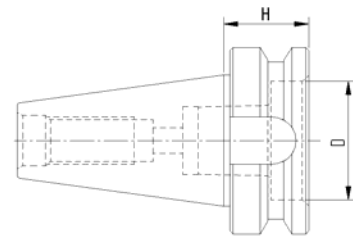
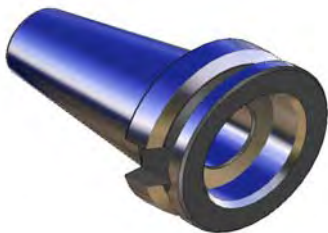
----- Secondo fattibilità, fornibili su richiesta con cono ISO 30 -----

Bilanciato G.6,3 12.000 RPM



Codice	ISO	Descrizione	L	D	d
340MPI13	40	ISO40 MAS403BT P/PUNTA INT.H98 DC13	98	50	1-13
340MPI16	40	ISO40 MAS403BT P/PUNTA INT.H98 DC16	98	57	1-16
350MPI13	50	ISO50 MAS403BT P/PUNTA INT.H109 DC13	104	50	1-13
350MPI16	50	ISO50 MAS403BT P/PUNTA INT.H109 DC16	109	57	1-16

**MANDRINI DI RICAMBIO - REPLACEMENT DRILL CHUCK HEADS -
 MANDRINS DE RECHANGE - ERSATZTEILE BOHRFÜTTER**



Codice	ISO	Descrizione	H	D
340CPI13	40	ISO40 MAS403BT SOLO MANDRINO 1-13	27	40
340CPI16	40	ISO40 MAS403BT SOLO MANDRINO 3-16	27	44
350CPI13	50	ISO50 MAS403BT SOLO MANDRINO 1-13	38	40
350CPI16	50	ISO50 MAS403BT SOLO MANDRINO 3-16	38	44

----- Secondo fattibilità, fornibili su richiesta con cono ISO 30 -----

COMPONENTI - SPARE PARTS - PIECES DETACHEES - ERSATZTEILE

Codice	MANDRINO	Q.tà	VITE	Q.tà
--------	----------	------	------	------



340MPI13	913INS01	1	110802501	1
340MPI16	916INS01	1	110802501	1
350MPI13	913INS01	1	110803501	1
350MPI16	916INS01	1	110803501	1



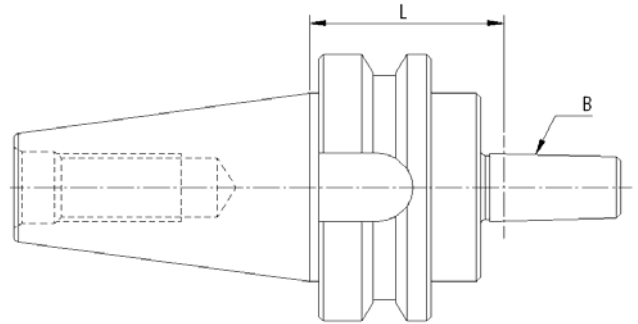
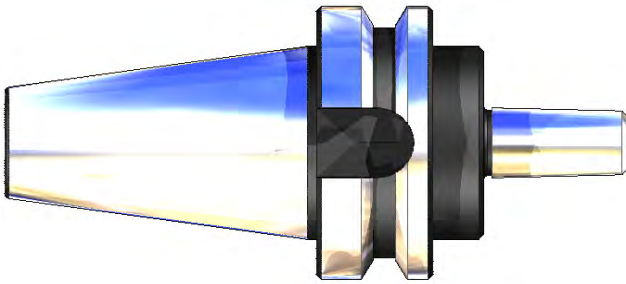
ATTACCO PER MANDRINI PORTAPUNTE
ARBORS FOR DRILL CHUCKS
ARBRES POUR MANDRINS DE PERÇAGE
BOHRFUTTERAUFNAHMEN



JIS-B 6339 M.AS 403/BT .AD/B

DIN 238

Bilanciato G.6,3 12.000 RPM



Codice	ISO	Descrizione	L	B
340MPP12	40	ISO40 MAS403BT P/PUNTE H.45 B12	45	12
340MPP16	40	ISO40 MAS403BT P/PUNTE H.45 B16	45	16
340MPP18	40	ISO40 MAS403BT P/PUNTE H.45 B18	45	18

Codice	ISO	Descrizione	L	B
350MPP12	50	ISO50 MAS403BT P/PUNTE H.45 B12	45	12
350MPP16	50	ISO50 MAS403BT P/PUNTE H.45 B16	45	16
350MPP18	50	ISO50 MAS403BT P/PUNTE H.45 B18	45	18

----- Secondo fattibilità, fornibili su richiesta con cono ISO 30 -----

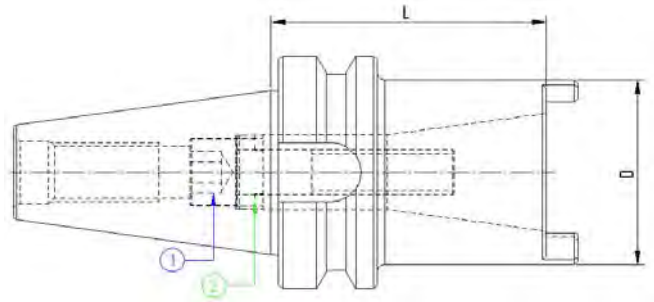
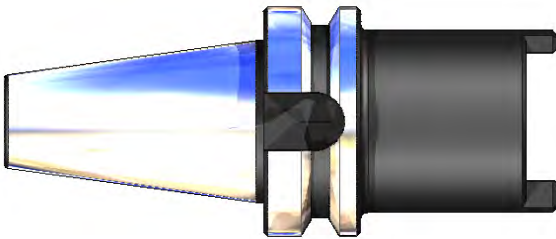


MANDRINI DI RIDUZIONE
REDUCTION SLEEVES
DOUILLES DE REDUCTION
ZWISCHENHUELSEN SK-SK



JIS-B 6339 M.AS 403/BT.A

M.AS403BT.A



Codice	ISO	Descrizione	L	D
340ISO30	40	ISO40 MAS403BT RIDUZIONE H70 ISO30	70	50
340ISO40	40	ISO40 MAS403BT RIDUZIONE H100 ISO40	100	68

Codice	ISO	Descrizione	L	D
350ISO40	50	ISO50 MAS403BT RIDUZIONE H70 ISO40	70	78
350ISO50	50	ISO50 MAS403BT PROLUNGA H120 ISO50	120	100

----- Secondo fattibilità, fornibili su richiesta con cono ISO 30 -----

COMPONENTI - SPARE PARTS - PIECES DETACHEES - ERSATZTEILE

TIPO	VITE	Q.tà	GHIERA	Q.tà
------	------	------	--------	------



ISO30	111205501	1	122000603	1
ISO40	111606514	1	122400903	1
ISO50	112408504	1	124002009	1



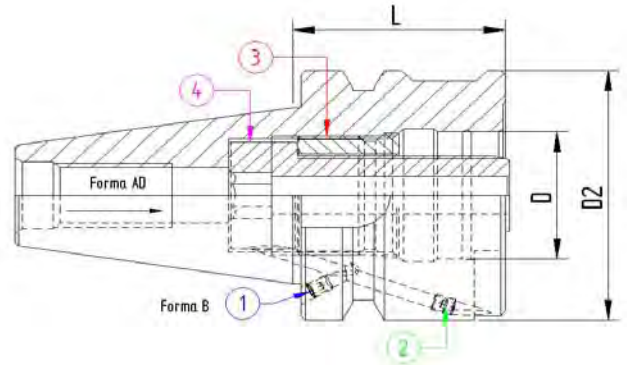
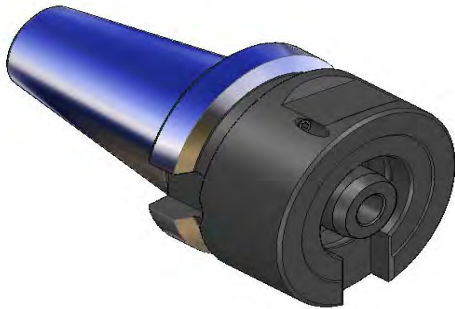
ATTACCHI BASE MODULARI "VARILOCK"
 MODULAR BASIC HOLDERS "VARILOCK"
 MODULE DE BASE "VARILOCK"
 GRUNDAUFNAHMEN "VARILOCK"



JIS-B 6339 M.AS 403/BT.AD/B



M.AS403BT-A

Bilanciato G.6,3 12.000 RPM





Codice	ISO	Descrizione	L	D2
340VL050	40	ISO40 MAS403BT MODULARE H.27 D.50	27	50
340VL063	40	ISO40 MAS403BT MODULARE H.35 D.63	35	63
340VL150	40	ISO40 MAS403BT MODULARE H.50 D.50	50	50
340VL163	40	ISO40 MAS403BT MODULARE H.50 D.63	50	63
340VL180	40	ISO40 MAS403BT MODULARE H.50 D.80	50	80

COMPONENTI - SPARE PARTS - PIECES DETACHEES - ERSATZTEILE

Ø	VITE	Q.tà	BOCCOLA	Q.tà
				
50	111604011	1	122502007	1
63	112005011	1	123002408	1
80	112005011	1	123002408	1

Codice	ISO	Descrizione	L	D2
350VL050	50	ISO50 MAS403BT MODULARE H.38 D.50	38	50
350VL150	50	ISO50 MAS403BT MODULARE H.50 D.50	50	50
350VL163	50	ISO50 MAS403BT MODULARE H.50 D.63	50	63
350VL180	50	ISO50 MAS403BT MODULARE H.50 D.80	50	80

COMPONENTI - SPARE PARTS - PIECES DETACHEES - ERSATZTEILE

Ø	VITE	Q.tà	BOCCOLA	Q.tà
				
50	111604011	1	122502007	1
63	112005012	1	123002408	1
80	112005012	1	123002408	1

----- Secondo fattibilità, fornibili su richiesta con cono ISO 30 -----

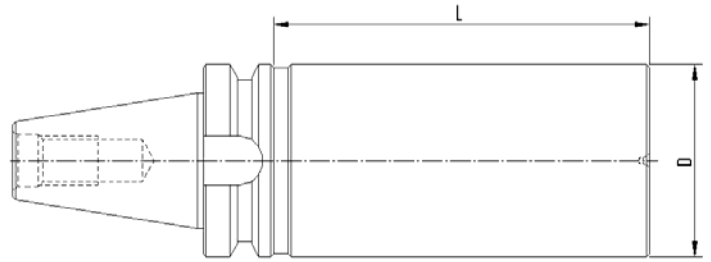
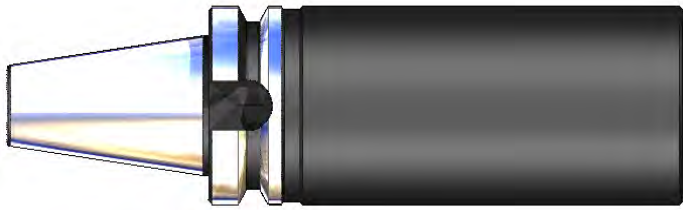


MANDRINI SEMILAVORATI A STELO TENERO
 BLANK TOOLHOLDER WITH SOFT SHANK
 BARRES D'ALEPAGE SEMI-FINIES
 ROHLINGE MIT WEICHEM SCHAFT



JIS-B 6339 M.AS 403/BT.AD

DLN 6358



Codice	ISO	Descrizione	L	D
340ST263	40	ISO40 MAS403BT ST.TENERO D.63x250	250	63
350ST397	50	ISO50 MAS403BT ST.TENERO D.97X315	315	97

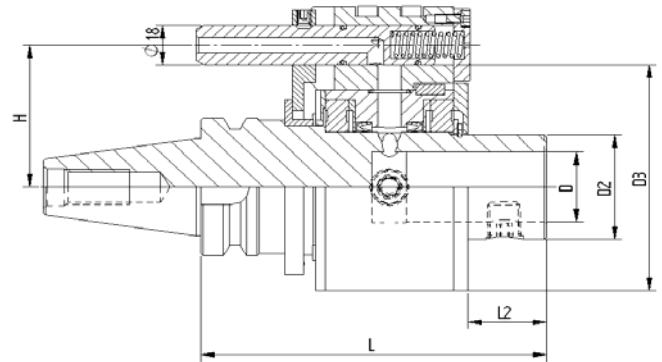
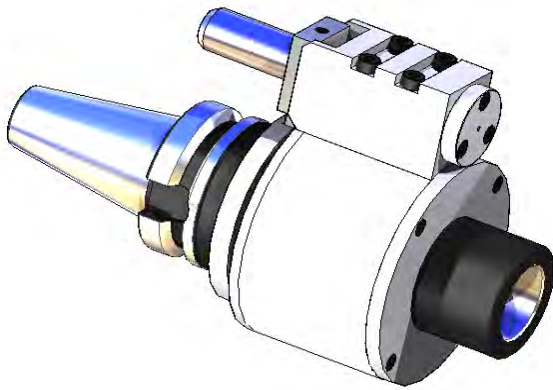
----- Secondo fattibilità, fornibili su richiesta con cono ISO 30 -----



DISTRIBUTORE ROTANTE DI REFRIGERANTE
 COOLANT FEEDER
 DISPOSITIV D'ARROSAGE TOURNANTE
 HUEHLMITTELZUFUEHRUNG




JTS-B 6339.M.AS 403/BT



Codice	ISO	Descrizione	H	L	L2	D	D2	D3
340DRC32	40	ISO40 MAS403BT DISTRIB.ROTANTE D.32	65	150	34	32	48	95
340DRC40	40	ISO40 MAS403BT DISTRIB.ROTANTE D.40	65	160	44	40	58	110

Codice	ISO	Descrizione	H	L	L2	D	D2	D3
350DRC40	50	ISO50 MAS403BT DISTRIB.ROTANTE D40	80	165	49	40	58	110

COMPONENTI - SPARE PARTS - PIECES DETACHEES - ERSATZTEILE

D	GRANO	Q.tà
		
32	101416154	1
40	101601604	2