

BUSSOLE
PER MASCHIATORI
E MANDRINI
A FORTE SERRAGGIO



BUSSOLA PER MASCHIARE SENZA FRIZIONE

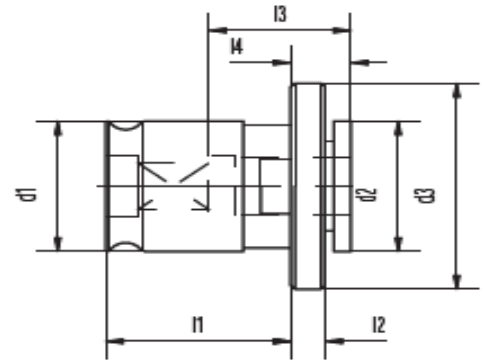
QUICK CHANGE TAPPING ADAPTERS WITHOUT SAFETY COUPLING

ADAPTEURS A CHANGEMENT RAPIDE SANS COUPLAGE DE SECURITE

SCHNELLWECHSELEINSAATZ OHNE SICHERHEITSKUPPLUNG



DLN 6499



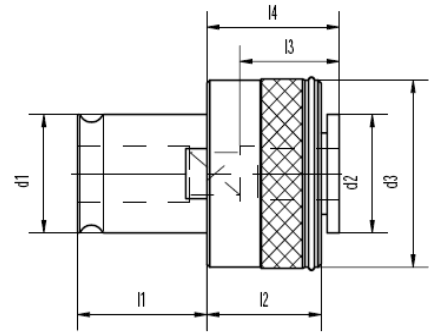
Codice	Descrizione	d1	d2	d3	l1	l2	l3
BSF1-2.8	BUSSOLA PORTA/M/S/F 2,8X2,1 GR.1	19	19	30	21,5	4	17
BSF1-3.5	BUSSOLA PORTA/M/S/F 3,5X2,7 GR.1	19	19	30	21,5	4	17
BSF1-4.0	BUSSOLA PORTA/M/S/F 4X3,0 GR.1	19	19	30	21,5	4	17
BSF1-4.5	BUSSOLA PORTA/M/S/F 4,5X3,4 GR.1	19	19	30	21,5	4	17
BSF1-5.0	BUSSOLA PORTA/M/S/F 5X4,0 GR.1	19	19	30	21,5	4	17
BSF1-6.0	BUSSOLA PORTA/M/S/F 6X4,9 GR.1	19	19	30	21,5	4	17
BSF1-7.0	BUSSOLA PORTA/M/S/F 7X5,5 GR.1	19	19	30	21,5	4	17
BSF1-8.0	BUSSOLA PORTA/M/S/F 8X6,2 GR.1	19	19	30	21,5	4	17
BSF1-9.0	BUSSOLA PORTA/M/S/F 9X7,0 GR.1	19	19	30	21,5	4	17
BSF1-10.0	BUSSOLA PORTA/M/S/F 10X8,0 GR.1	19	19	30	21,5	4	17
BSF1-11.0	BUSSOLA PORTA/M/S/F 11X9,0GR.1	19	19	30	21,5	4	17
BSF2-6.0	BUSSOLA PORTA/M/S/F 6X4,9 GR.2	31	30	48	35	5	30
BSF2-7.0	BUSSOLA PORTA/M/S/F 7X5,5 GR.2	31	30	48	35	5	30
BSF2-8.0	BUSSOLA PORTA/M/S/F 8X6,2 GR.2	31	30	48	35	5	30
BSF2-9.0	BUSSOLA PORTA/M/S/F 9X7,0 GR.2	31	30	48	35	5	30
BSF2-10.0	BUSSOLA PORTA/M/S/F 10X8,0 GR.2	31	30	48	35	5	30
BSF2-11.0	BUSSOLA PORTA/M/S/F 11X9,0 GR.2	31	30	48	35	5	30
BSF2-12.0	BUSSOLA PORTA/M/S/F 12X9,0 GR.2	31	30	48	35	5	30
BSF2-14.0	BUSSOLA PORTA/M/S/F 14X11,0 GR.2	31	30	48	35	5	30
BSF2-16.0	BUSSOLA PORTA/M/S/F 16X12,0 GR.2	31	30	48	35	5	30
BSF2-18.0	BUSSOLA PORTA/M/S/F 18X14,6 GR.2	31	30	48	35	5	30
BSF2-20.0	BUSSOLA PORTA/M/S/F 20X16,0 GR.2	31	30	48	35	5	30



BUSSOLA PER MASCHIARE CON FRIZIONE
 QUICK CHANGE TAPPING ADAPTERS WITH SAFETY COUPLING
 ADAPTEURS A CHANGEMENT RAPIDE AVEC COUPLAGE DE SECURITE
 SCHNELLWECHSELEINSETZE MIT SICHERHEITSKUPPLUNG



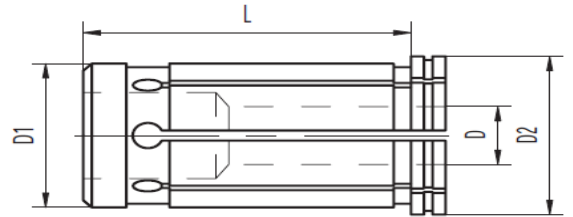
DLN 6499



Codice	Descrizione	d1	d2	d3	l1	l2	l3
BCF1-3.5	BUSSOLA PORTA/M/C/F 3,5X2,7 GR.1	19	19	32	21,5	25	17
BCF1-4.5	BUSSOLA PORTA/M/C/F 4,5X3,4 GR.1	19	19	32	21,5	25	17
BCF1-5.5	BUSSOLA PORTA/M/C/F 5,5X4,3 GR.1	19	19	32	21,5	25	17
BCF1-6.0	BUSSOLA PORTA/M/C/F 6X4,9 GR.1	19	19	32	21,5	25	17
BCF1-7.0	BUSSOLA PORTA/M/C/F 7X5,5 GR.1	19	19	32	21,5	25	17
BCF1-8.0	BUSSOLA PORTA/M/C/F 8X6,2 GR.1	19	19	32	21,5	25	17
BCF1-9.0	BUSSOLA PORTA/M/C/F 9X7,0 GR.1	19	19	32	21,5	25	17
BCF1-10.0	BUSSOLA PORTA/M/C/F 10X8,0 GR.1	19	19	32	21,5	25	17
BCF1-11.0	BUSSOLA PORTA/M/C/F 11X9,0 GR.1	19	19	32	21,5	25	17
BCF2-6.0	BUSSOLA PORTA/M/C/F 6X4,9 GR.2	31	30	50	35,0	31	30
BCF2-7.0	BUSSOLA PORTA/M/C/F 7X5,5 GR.2	31	30	50	35,0	31	30
BCF2-8.0	BUSSOLA PORTA/M/C/F 8X6,2 GR.2	31	30	50	35,0	31	30
BCF2-9.0	BUSSOLA PORTA/M/C/F 9X7,0 GR.2	31	30	50	35,0	31	30
BCF2-10.0	BUSSOLA PORTA/M/C/F 10X8,0 GR.2	31	30	50	35,0	31	30
BCF2-11.0	BUSSOLA PORTA/M/C/F 11X9,0 GR.2	31	30	50	35,0	31	30
BCF2-12.0	BUSSOLA PORTA/M/C/F 12X9,0 GR.2	31	30	50	35,0	31	30
BCF2-14.0	BUSSOLA PORTA/M/C/F 14X11,0 GR.2	31	30	50	35,0	31	30
BCF2-16.0	BUSSOLA PORTA/M/C/F 16X12,0 GR.2	31	30	50	35,0	31	30
BCF2-18.0	BUSSOLA PORTA/M/C/F 18X14,6 GR.2	31	30	50	35,0	31	30

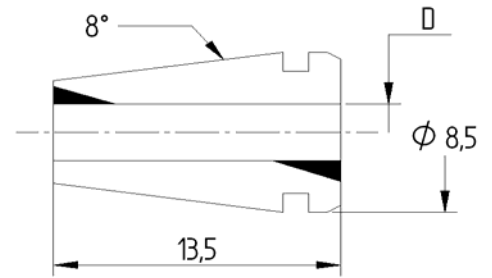


PINZE PER MANDRINI A FORTE SERRAGGIO
COLLETS FOR MILLING CHUCK
PINCES POUR MANDRINS A FORT SERRAGE
SPANNZANGEN FÜR KRAFTSPANNFUTTER

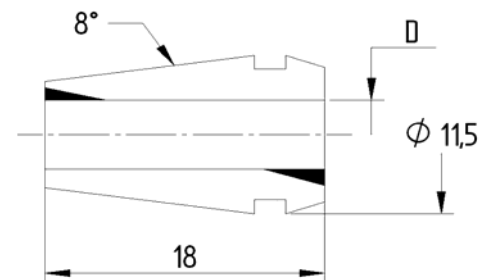


Codice	Descrizione	D1	D2	L	D
920BFS06	PINZA PER FORTE SERR. Ø20 X 6	20	25	50	6
920BFS08	PINZA PER FORTE SERR. Ø20 X 8	20	25	50	8
920BFS10	PINZA PER FORTE SERR. Ø20 X 10	20	25	50	10
920BFS12	PINZA PER FORTE SERR. Ø20 X 12	20	25	50	12
920BFS16	PINZA PER FORTE SERR. Ø20 X 16	20	25	50	16
932BFS06	PINZA PER FORTE SERR. Ø32 X 6	32	37	60	6
932BFS08	PINZA PER FORTE SERR. Ø32 X 8	32	37	60	8
932BFS10	PINZA PER FORTE SERR. Ø32 X 10	32	37	60	10
932BFS12	PINZA PER FORTE SERR. Ø32 X 12	32	37	60	12
932BFS16	PINZA PER FORTE SERR. Ø32 X 16	32	37	60	16
932BFS20	PINZA PER FORTE SERR. Ø32 X 20	32	37	60	20
932BFS25	PINZA PER FORTE SERR. Ø32 X 25	32	37	60	25

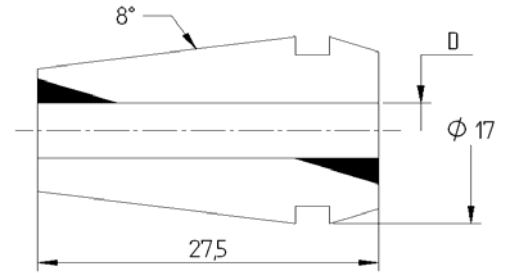
PINZE



Codice	ER	D
908ER010	8	1
908ER015	8	1,5
908ER020	8	2
908ER025	8	2,5
908ER030	8	3
908ER035	8	3,5
908ER040	8	4
908ER045	8	4,5
908ER050	8	5

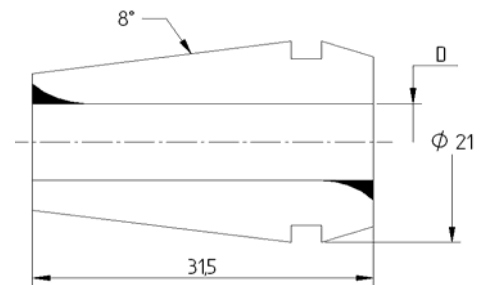


Codice	ER	D
911ER010	11	1
911ER015	11	1,5
911ER020	11	2
911ER025	11	2,5
911ER030	11	3
911ER035	11	3,5
911ER040	11	4
911ER045	11	4,5
911ER050	11	5
911ER055	11	5,5
911ER060	11	6
911ER065	11	6,5
911ER070	11	7



Codice	ER	D
916ER010	16	1
916ER015	16	1,5
916ER020	16	2
916ER025	16	2,5
916ER030	16	3
916ER035	16	3,5
916ER040	16	4
916ER045	16	4,5

Codice	ER	D
916ER050	16	5
916ER055	16	5,5
916ER060	16	6
916ER065	16	6,5
916ER070	16	7
916ER080	16	8
916ER090	16	9
916ER100	16	10

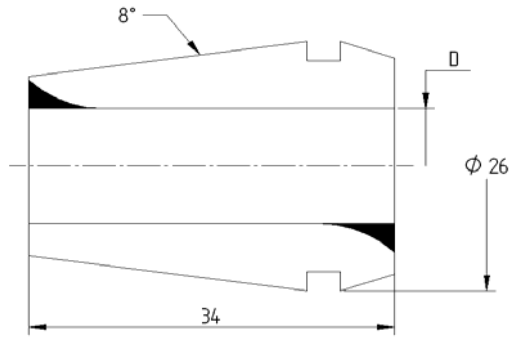


Codice	ER	D
920ER010	20	1
920ER015	20	1,5
920ER020	20	2
920ER025	20	2,5
920ER030	20	3
920ER035	20	3,5
920ER040	20	4
920ER050	20	5
920ER060	20	6
920ER070	20	7
920ER080	20	8
920ER090	20	9
920ER100	20	10
920ER110	20	11
920ER120	20	12
920ER130	20	13

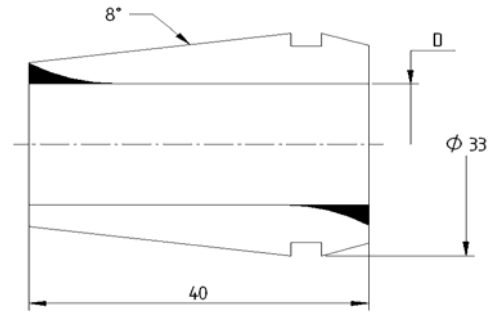

 PINZE TIPO ER
 COLLETS ER TYPE
 PINCES TYPE ER
 ER TYP SPANNZANGEN



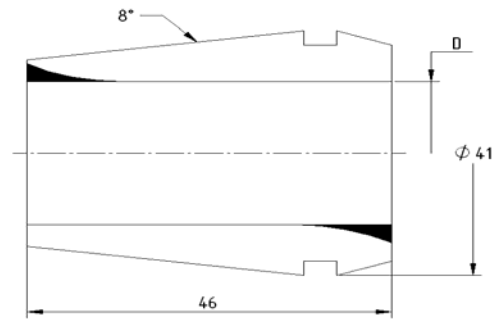
DIN 6499/B



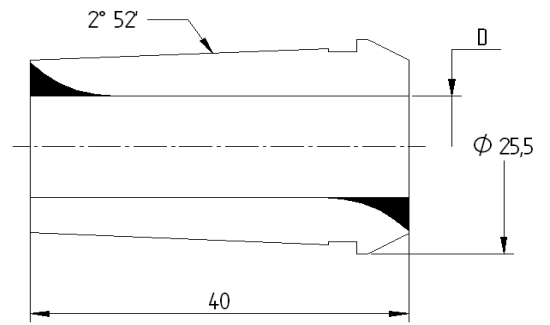
Codice	ER	D
925ER010	25	1
925ER015	25	1,5
925ER020	25	2
925ER025	25	2,5
925ER030	25	3
925ER035	25	3,5
925ER040	25	4
925ER050	25	5
925ER060	25	6
925ER070	25	7
925ER080	25	8
925ER090	25	9
925ER100	25	10
925ER110	25	11
925ER120	25	12
925ER130	25	13
925ER140	25	14
925ER150	25	15
925ER160	25	16



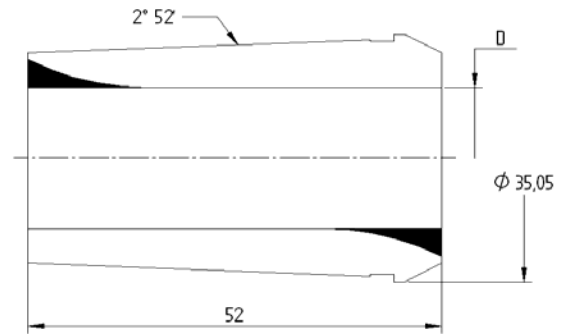
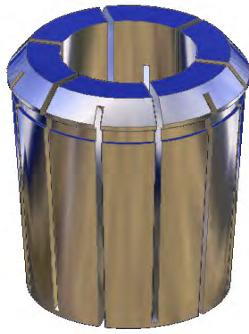
Codice	ER	D
932ER030	32	3
932ER040	32	4
932ER050	32	5
932ER060	32	6
932ER070	32	7
932ER080	32	8
932ER090	32	9
932ER100	32	10
932ER110	32	11
932ER120	32	12
932ER130	32	13
932ER140	32	14
932ER150	32	15
932ER160	32	16
932ER170	32	17
932ER180	32	18
932ER190	32	19
932ER200	32	20



Codice	ER	D
940ER030	40	3
940ER040	40	4
940ER050	40	5
940ER060	40	6
940ER070	40	7
940ER080	40	8
940ER090	40	9
940ER100	40	10
940ER110	40	11
940ER120	40	12
940ER130	40	13
940ER140	40	14
940ER150	40	15
940ER160	40	16
940ER170	40	17
940ER180	40	18
940ER190	40	19
940ER200	40	20
940ER210	40	21
940ER220	40	22
940ER230	40	23
940ER240	40	24
940ER250	40	25
940ER260	40	26
940ER270	40	27
940ER280	40	28
940ER290	40	29
940ER300	40	30



Codice	EOC	D
916EO010	16	1
916EO015	16	1,5
916EO020	16	2
916EO025	16	2,5
916EO030	16	3
916EO035	16	3,5
916EO040	16	4
916EO045	16	4,5
916EO050	16	5
916EO055	16	5,5
916EO060	16	6
916EO065	16	6,5
916EO070	16	7
916EO075	16	7,5
916EO080	16	8
916EO085	16	8,5
916EO090	16	9
916EO095	16	9,5
916EO100	16	10
916EO105	16	10,5
916EO110	16	11
916EO115	16	11,5
916EO120	16	12
916EO125	16	12,5
916EO130	16	13
916EO135	16	13,5
916EO140	16	14
916EO145	16	14,5
916EO150	16	15
916EO155	16	15,5
916EO160	16	16



Codice	EOC	D
925EO020	25	2
925EO025	25	2,5
925EO030	25	3
925EO035	25	3,5
925EO040	25	4
925EO045	25	4,5
925EO050	25	5
925EO055	25	5,5
925EO060	25	6
925EO065	25	6,5
925EO070	25	7
925EO075	25	7,5
925EO080	25	8
925EO085	25	8,5
925EO090	25	9
925EO095	25	9,5
925EO100	25	10
925EO105	25	10,5
925EO110	25	11
925EO115	25	11,5
925EO120	25	12
925EO125	25	12,5
925EO130	25	13
925EO135	25	13,5
925EO140	25	14
925EO145	25	14,5
925EO150	25	15

Codice	EOC	D
925EO155	25	15,5
925EO160	25	16
925EO165	25	16,5
925EO170	25	17
925EO175	25	17,5
925EO180	25	18
925EO185	25	18,5
925EO190	25	19
925EO195	25	19,5
925EO200	25	20
925EO205	25	20,5
925EO210	25	21
925EO215	25	21,5
925EO220	25	22
925EO225	25	22,5
925EO230	25	23
925EO235	25	23,5
925EO240	25	24
925EO245	25	24,5
925EO250	25	25

Tipo " ER "

Codice	Num. di pinze	Capacità
908ERS09	9 Pinze (1 - 5)	Ø 1-1,5-2-2,5-3-3,5-4-4,5-5
911ERS13	13 Pinze (1 - 7)	Ø 1-1,5-2-2,5-3-3,5-4-4,5-5-5,5-6-6,5-7
916ERS10	10 Pinze (1 - 10)	Ø 1-2-3-4-5-6-7-8-9-10
920ERS12	12 Pinze (2 - 13)	Ø 2-3-4-5-6-7-8-9-10-11-12-13
925ERS15	15 Pinze (2 - 16)	Ø 2-3-4-5-6-7-8-9-10-11-12-13-14-15-16
932ERS18	18 Pinze (3 - 20)	Ø 3-4-5-6-7-8-9-10-11-12-13-14-15-16-17-18-19-20
940ERS23	23 Pinze (4 - 26)	Ø 4-5-6-7-8-9-10-11-12-13-14-15-16-17-18-19-20-21-22-23-24-25-26
940ERS28	28 Pinze (3 - 30)	Ø 3-4-5-6-7-8-9-10-11-12-13-14-15-16-17-18-19-20-21-22-23-24-25-26-27-28-29-30

SPPER08	SCATOLA PINZE ER 8 (15 sedi)
SPPER11	SCATOLA PINZE ER 11 (15 sedi)
SPPER16	SCATOLA PINZE ER 16 (15 sedi)
SPPER20	SCATOLA PINZE ER 20 (15 sedi)
SPPER25	SCATOLA PINZE ER 25 (21 sedi)
SPPER32	SCATOLA PINZE ER 32 (21 sedi)
SPPER40	SCATOLA PINZE ER 40 (30 sedi)



Tipo " EOC "

Codice	Num. di pinze	Capacità
916EOS15	15 Pinze (2 - 16)	Ø 2-3-4-5-6-7-8-9-10-11-12-13-14-15-16
925EOS24	24 Pinze (2 - 25)	Ø 2-3-4-5-6-7-8-9-10-11-12-13-14-15-16-17-18-19-20-21-22-23-24-25
932EOS29	29 Pinze (4 - 32)	Ø 4-5-6-7-8-9-10-11-12-13-14-15-16-17-18-19-20-21-22-23-24-25-26-27-28-29-30-31-32

SPPEOC16	SCATOLA PINZE EOC 16 (21 sedi)
SPPEOC25	SCATOLA PINZE EOC 25 (30 sedi)
SPPEOC32	SCATOLA PINZE EOC 32 (30 sedi)

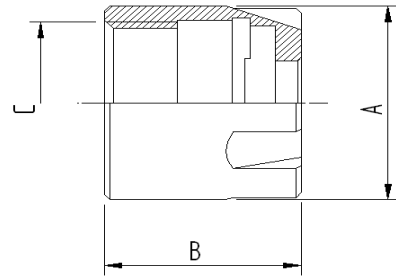
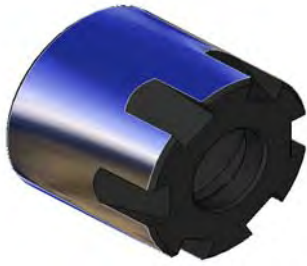


GHIERE


 GHIERA MINI
 MINI NUT
 ECROU MINI
 MINI SPANNMUTTER




DIN 6499



Codice	ER	A	B	C
908GHRMN	8M	12	10,8	M10X0,75
911GHRMN	11M	16	12,0	M13X0,75
916GHRMN	16M	22	18	M19X1
920GHRMN	20M	28	19	M24X1
925GHRMN	25M	35	20	M30X1

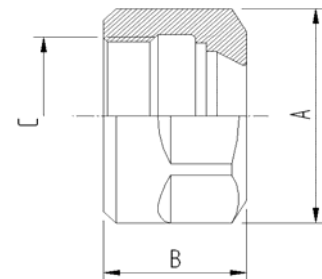
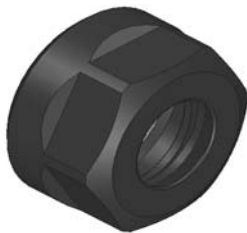


908ER	908CHVMN
911ER	911CHVMN
916ER	916CHVMN
920ER	920CHVMN
925ER	925CHVMN


 GHIERA ER TIPO ESAGONALE
 ER CLAMPING NUTS HEXAGONAL TYPE
 ECROU ER HEXAGONAL TYPE
 SECHSKANTMUTTER TYP ER




DIN 6499



Codice	ER	A	B	C
911GHRES	11	19	14	M14X0,75
916GHRES	16	28	17,5	M22X1,5
920GHRES	20	34	19	M25X1,5

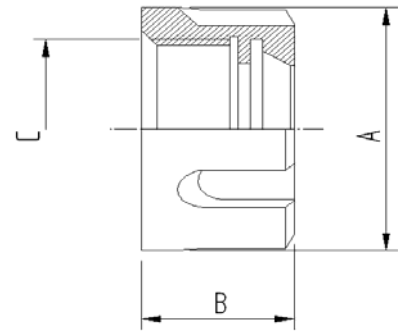
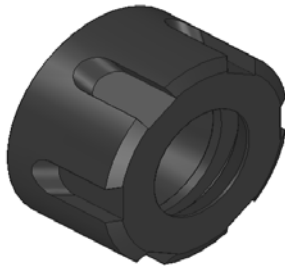


911ER	911CHVES
916ER	916CHVES
920ER	920CHVES


GHIERA BILANCIATA STANDARD
BALANCED NUT
ECROU EQUILIBRE
GEWUCHTETE SPANNMUTTER



DIN 6499



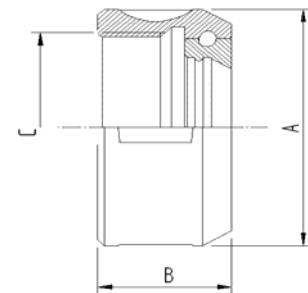
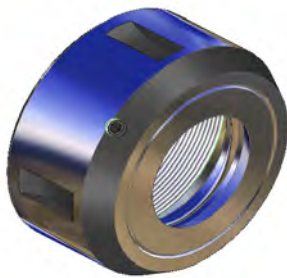
Codice	ER	A	B	C		
916GHREQ	16	32	17	M22X1,5	916ER	916CHVST
920GHREQ	20	35	19	M25X1,5	920ER	920CHVST
925GHREQ	25	42	20	M32X1,5	925ER	925CHVST
932GHREQ	32	50	22,5	M40X1,5	932ER	932CHVST
940GHREQ	40	63	25,5	M50X1,5	940ER	940CHVST
950GHREQ	50	78	35,3	M64X2	950ER	950CHVST




GHIERA EOC
EOC NUT
ECROU EOC
EOC SPANNMUTTER




DIN 6388

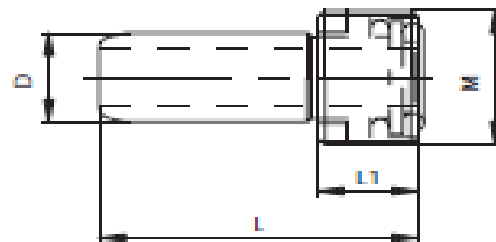


Codice	EOC	A	B	C		
916GHROS	16	43	24	M33X1,5	916EO	916CHVOC
925GHROS	25	60	30	M48X2	925EO	925CHVOC
932GHROS	32	72	33,5	M60X2,5	932EO	932CHVOC



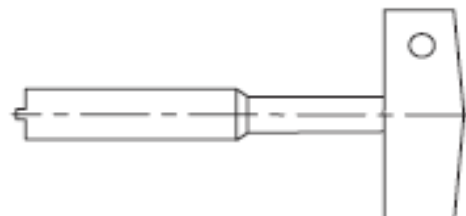
ADDUZIONE REFRIGERANTE


SET ADDUZIONE REFRIGERANTE
COOLANT SUPPLY UNIT
DISPOSITIF DE TRANSFERT DE LIQUIDE DE LUBRIFICATION
KUEHLMITTELUEBERGABEROHR



CODICE	HSK	M	D	L1	L
950APR02	50/F	12 x 1	8	7,5	29,3
950APR01	50/A - 50/E - 63/F	16 x 1	10	9,5	33
963APR01	63/A - 63/E	18 x 1	12	11,5	36,6
910APR01	100/A	24 x 1,5	16	15,5	44

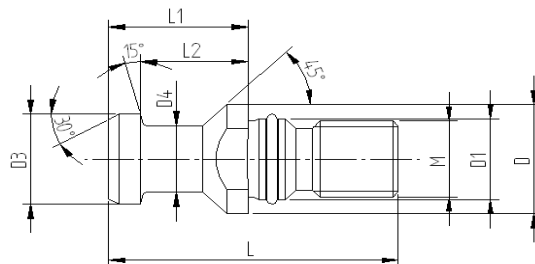

CHIAVE PER ADDUTTORE REFRIGERANTE
KEY FOR COOLANT SUPPLY UNIT
CLE' POUR LE DISPOSITIF DE TRANSFERT DE LIQUIDE DE LUBRIFICATION
SCHLUESSEL FUER KUEHLMITTELUEBERGABESATZ



CODICE	HSK
950CHVAR	50
963CHVAR	63
910CHVAR	100

CODOLI

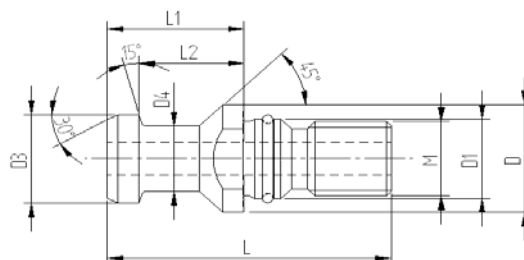
Ohne boh rung - Not drilled - Non percée - Non forato
Mit o'ring - With o'ring - Avec joint torique - Con OR di tenuta



Codice	ISO	M	D	D1	D3	D4	L	L1	L2
940TIR01	40	M16	23	17	19	14	54	26	20
950TIR01	50	M24	36	25	28	21	74	34	25

Gebohrt - Drilled - Percée - Forato

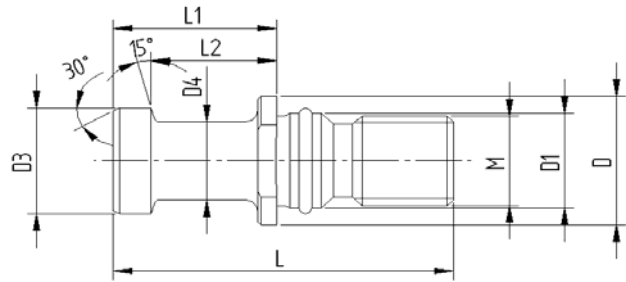
Mit o'ring - With o'ring - Avec joint torique - Con OR di tenuta



Codice	ISO	M	D	D1	D3	D4	L	L1	L2	Foro
940TIR02	40	M16	23	17	19	14	54	26	20	7
950TIR02	50	M24	36	25	28	21	74	34	25	11,5

----- N.B. Codoli disponibili anche per coni ISO 30 -----

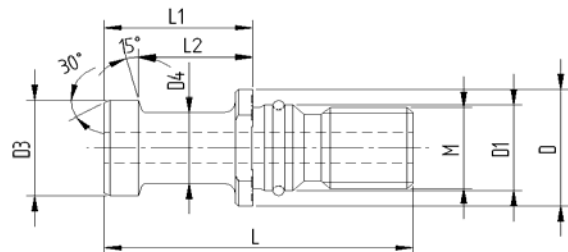
Ohne bohrung - Not drilled - Non percée - Non forato
Mit o'ring - With o'ring - Avec joint torique - Con OR di tenuta



Codice	ISO	M	D	D1	D3	D4	L	L1	L2
940TIR11	40	M16	23	17	19	14	54	26	20
950TIR11	50	M24	36	25	28	21	74	34	25

Gebohrt - Drilled - Percée - Forato

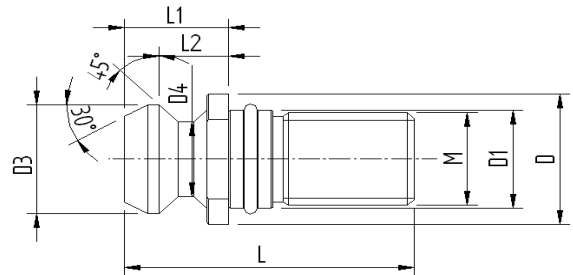
Mit o'ring - With o'ring - Avec joint torique - Con OR di tenuta



Codice	ISO	M	D	D1	D3	D4	L	L1	L2	Foro
940TIR12	40	M16	23	17	19	14	54	26	20	7
950TIR12	50	M24	36	25	28	21	74	34	25	11,5

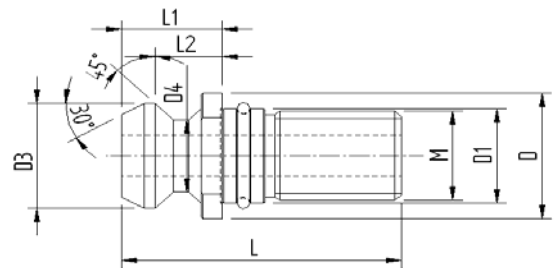
----- N.B. Codoli disponibili anche per coni ISO 30 -----

Ohne bohrung - Not drilled - Non percée - Non forato
Mit o'ring - With o'ring - Avec joint torique - Con OR di tenuta



Codice	ISO	M	D	D1	D3	D4	L	L1	L2
940TIR21	40	M16	22,5	17	18,9	12,9	44,5	16,4	11,1
950TIR21	50	M24	37	25	29,1	19,6	65,5	25,5	17,9

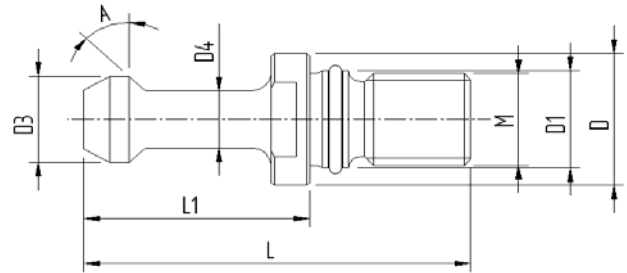
Gebohrt - Drilled - Percée - Forato
Mit o'ring - With o'ring - Avec joint torique - Con OR di tenuta



Codice	ISO	M	D	D1	D3	D4	L	L1	L2	Foro
940TIR22	40	M16	22,5	17	18,9	12,9	44,5	16,4	11,1	7,3
950TIR22	50	M24	37	25	29,1	19,6	65,5	25,5	17,9	11,5

----- N.B. Codoli disponibili anche per coni ISO 30 -----

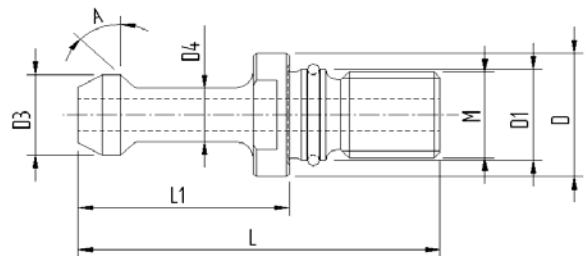
Ohne bohrtung - Not drilled - Non percée - Non forato
Mit o'ring - With o'ring - Avec joint torique - Con OR di tenuta



Codice	BT	A	M	L	L1	D	D1	D3	D4
940TIR51	40	30°	M16	60	35	23	17	15	10
940TIR52	40	45°	M16	60	35	23	17	15	10
940TIR50	40	90°	M16	60	35	23	17	15	10
950TIR51	50	30°	M24	85	45	38	25	23	17
950TIR52	50	45°	M24	85	45	38	25	23	17
950TIR50	50	90°	M24	85	45	38	25	23	17

Gebohrt - Drilled - Percée - Forato

Mit o'ring - With o'ring - Avec joint torique - Con OR di tenuta



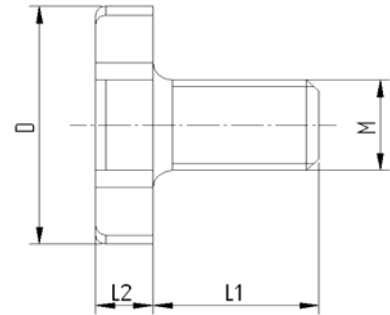
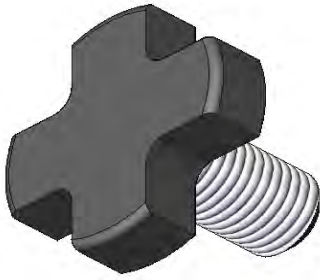
Codice	BT	A	M	L	L1	D	D1	D3	D4	Foro
940TIR55	40	30°	M16	60	35	23	17	15	10	4
940TIR53	40	45°	M16	60	35	23	17	15	10	4
940TIR54	40	90°	M16	60	35	23	17	15	10	4
950TIR55	50	30°	M24	85	45	38	25	23	17	6
950TIR53	50	45°	M24	85	45	38	25	23	17	6
950TIR54	50	90°	M24	85	45	38	25	23	17	6

----- N.B. Codoli disponibili anche per coni ISO 30 -----

VITI TESTA

A

CROCE



CODICE	M	D	L1	L2
916VTC02	M8	20	16	6
922VTC02	M10	28	18	7
927VTC02	M12	35	22	8
932VTC02	M16	42	26	9
940VTC02	M20	52	30	10

CHIAVI



CHIAVI PER GHIERA MINI
 WRENCHES FOR MINI NUT
 CLES DE SERRAGE POUR ECROU MINI
 SPANNSCHLUESSEL FUER MINI SPANNMUTTER



Codice	ER
908CHVMN	8M
911CHVMN	11M
916CHVMN	16M
920CHVMN	20M
925CHVMN	25M



CHIAVI PER GHIERE ESAGONALI
 WRENCHES FOR EXAGONAL CLAMPING NUTS
 CLES POUR HEXAGONAL ECROU
 SPANNSCHLUESSEL FUER SECHSKANTMUTTER




Codice	ER
911CHVES	11
916CHVES	16
920CHVES	20



CHIAVI PER GHIERA STANDARD
 WRENCHES FOR STANDARD NUT
 CLES DE SERRAGE POUR ECROU STANDARD
 SPANNSCHLUESSEL FUER STANDARD SPANNMUTTER




Codice	ER
916CHVST	16
920CHVST	20
925CHVST	25
932CHVST	32
940CHVST	40
950CHVST	50


 CHIAVI CON PRESA LATERALE
 WRENCHES WITH SIDE GRIP
 CLES AVEC PRISES LATERAL
 HAKENSCHLUESSEL



Codice	EOC
--------	-----

916CHVOC	16
925CHVOC	25
932CHVOC	32


 CHIAVE PER VITE TESTA A CROCE
 WRENCHES FOR TOOLS RETAINING SCREW
 CLES A VIS A CROSSE
 SPANNSCHLUESSEL FUER FRAESERANZUGSSCHRAUBEN



Codice	Vite	Ø
--------	------	---

916CHVTC	16	M8
922CHVTC	22	M10
927CHVTC	27	M12
932CHVTC	32	M16
940CHVTC	40	M20